

Hot Tub Collection

JACUZZI® HOT TUB BROCHURE



Jacuzzi®

A man is shown from the back, sitting in a hot tub. His skin is wet and glistening with water droplets, reflecting the warm, golden light of the sun. He has his arms raised and is looking out over a body of water. The background is a soft, out-of-focus blue, suggesting a sunset or sunrise. The overall mood is one of relaxation and tranquility.

The most extraordinary pause in the world.®

Our story originated when Ken Jacuzzi, age 2, was diagnosed with rheumatoid arthritis. His father invented the world's first at-home pump to provide pain-relieving hydrotherapy.



From that moment forward, Jacuzzi has deepened its expertise in moving water, bringing joy to millions of homes around the world.

Jacuzzi brand products are designed to restore balance and heighten the joys and benefits of hydrotherapy. Our products are enjoyed in more than 100 countries and are manufactured by thousands of employees in five countries.



Let it all soak in

Behind this extraordinary pause is the Jacuzzi® hydromassage, a distinctive and unrivaled experience. Heat, buoyancy, and optimal massage all come together for your relaxation, joy, and well-being.

Heat

Dilates blood vessels to increase blood flow, delivering more oxygen to the muscles.

Buoyancy

Creates weightlessness and 360° support, relieving pressure on joints, muscles, and nerves.

Optimal massage

Boosts circulation and releases endorphins, providing relaxation from head to toe.

Heavy duty, light touch

Aqualibrium® produces the perfect balance of air and water. Jacuzzi® PowerPro® jets emphasize 360° air induction, to provide a unique high-volume, low-pressure massage. These exclusive jets gently deliver a deeper, more powerful massage.



The massage that's right for you

Everyone likes their massage a little different. Strategically placed Jacuzzi® PowerPro® jets target specific muscle groups with a completely tailored massage. Adjust the flow and intensity from each jet. It's the massage that's right for you.

NX

Targets the sensitive neck area with a highly focused stream to relieve tension and strain. Move nozzle to personalise massage direction.



FX

Exclusive spiral design focuses on smaller muscle groups with an energetic impact, stimulating pressure points in the shoulders, back, and feet.



MX

The original performance therapy jet. The MX includes a completely adjustable nozzle with a 60° range for bold, high-volume massage action right where you need it.



RX

Delivers a full-coverage massage—producing a powerful kneading motion to relieve muscle tension, primarily in your middle and upper back.



PX

Soothes discomfort in the hands and wrists by providing relief to pressure points on the hands, and gently pulsing on palms and wrists.



BX

Its patented design, developed to reinvigorate leg muscles, delivers a stimulating massage with our highest air-to-water ratio for a bubbly effect.



- J-LX® / J-400™ / J-300™
- J-300™ exclusive
- J-LX® / J-400™ exclusive

Neck



Dorsal



Lumbar



Hips



Wrists



Legs



Feet



Please be seated

Decades of expertise drive our design process, to deliver personalised comfort. The collection of seats in each Jacuzzi® Hot Tub facilitates full-body hydromassage, while balancing the flow to every seat for the best experience.



A

FX-IR therapy seat

Neck, shoulder, and back relief

A collection of FX jets combines full back and neck hydromassage with Infrared and Red Light therapy that targets deep tissue within the lumbar region of the lower back. It's an unprecedented and rejuvenating hot tub experience.

B

MX therapy seat

The original in low-back relief

Ease into this deeply contoured seat to release tension in the lower back with a high-volume, low-pressure massage. Maximised air output delivers a soothing deep-tissue massage. Paired with neck jets for a fully relaxing experience.

C

RX therapy seat

Comforting back and shoulder relief

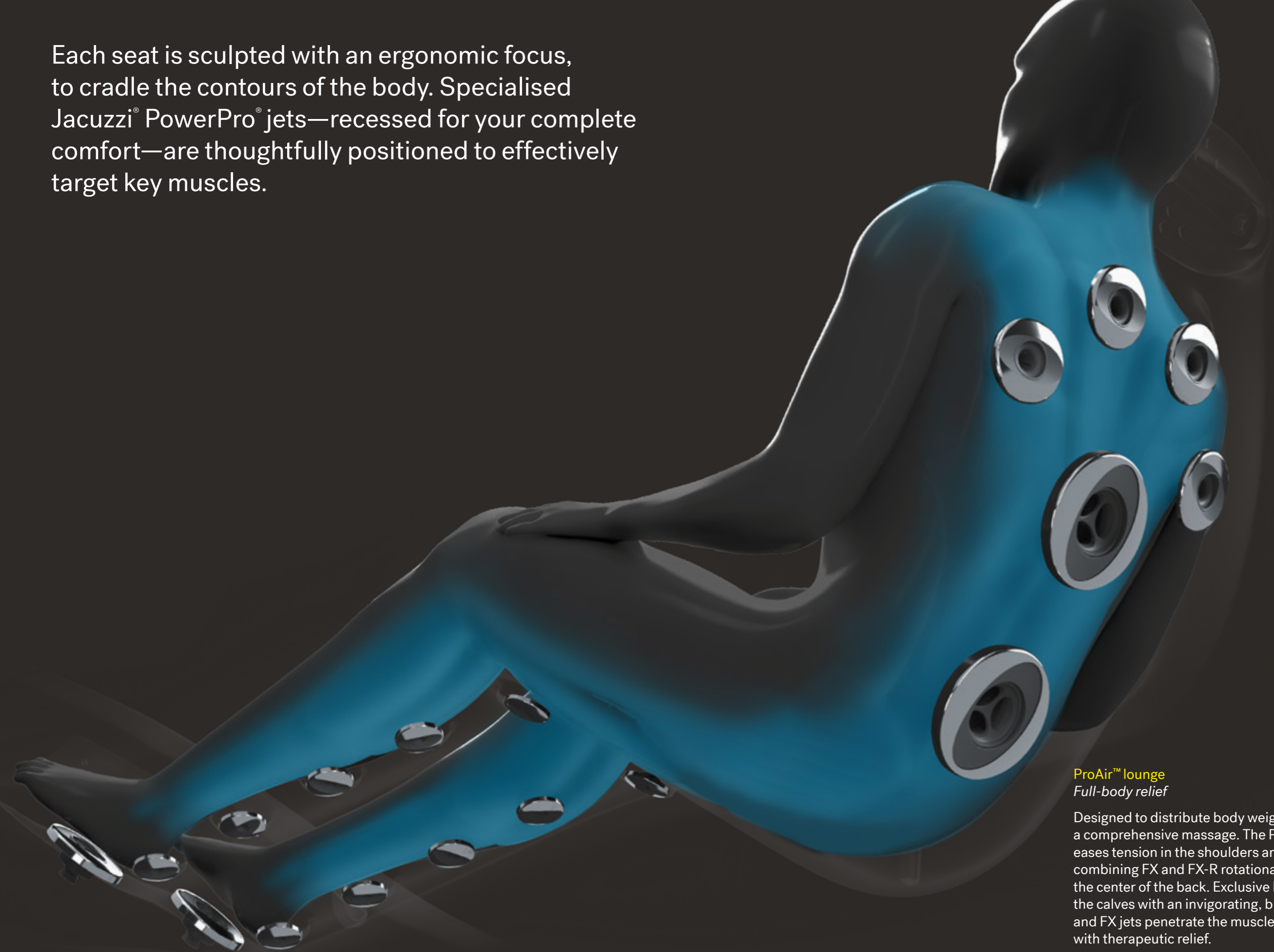
A ring of spinning RX jets targets key back and shoulder muscles to soothe stiffness and release tension, while neck jets add further relief. It's a key part of our highest performing hydromassage.

A

B

C

Each seat is sculpted with an ergonomic focus, to cradle the contours of the body. Specialised Jacuzzi® PowerPro® jets—recessed for your complete comfort—are thoughtfully positioned to effectively target key muscles.



ProAir™ lounge
Full-body relief

Designed to distribute body weight evenly for a comprehensive massage. The ProAir lounge eases tension in the shoulders and back, by combining FX and FX-R rotational jets along the center of the back. Exclusive BX jets target the calves with an invigorating, bubbly massage, and FX jets penetrate the muscles of the feet with therapeutic relief.

A new frontier in wellness

Another first from Jacuzzi, we have introduced our exclusive Infrared and Red Light therapy across a full range of wellness products—from saunas, to swim spas and hot tubs. It works in harmony with hydrotherapy to soothe and rejuvenate beneath the surface.



IR



Rejuvenation meets relaxation

The rejuvenating powers of Infrared and Red Light therapy work together deep beneath the skin's surface to relieve pain, improve range of motion, and help you reach a state of mindfulness.

Relief where it's needed most

Low back pain is the leading cause of disability worldwide,¹ so we strategically placed IR and Red Light therapy to target deep tissue within the lumbar region of the lower back.

Backed by research

Substantial evidence supports the efficacy of IR and Red Light therapy to relieve low back pain.² To ensure safety, it's been tested by certified third-party Intertek[®] test laboratories.³

1 Source: World Health Organization. Visit <https://www.who.int/news-room/fact-sheets/detail/musculoskeletal-conditions>
2 Source: 2008 Cochrane Review
3 The IR and Red Light device met the IEC 62471 Photobiological Safety Standard

● IR + Red Light



Skin level penetration



Red Light (660nm)
Specialized deep red light reaches surface tissue and cells



Near Infrared (850nm)
Light delivered at wavelengths that promote cell regeneration and repair

Relax while the water goes to work.™



A holistic approach to water care

Every Jacuzzi® Hot Tub includes filtration and water treatment technology, to deliver exceptional cleaning power and reduce the need for chemical sanitisers.

1 2

3 4 5 6

UV-C technology is standard on all Jacuzzi® Hot Tubs.

Clean water, less effort

Harness the power of active oxygen for a hands-free approach to water care. ClearRay Active Oxygen® System works harder to clean the water longer. A UV-C bulb is directed toward the water, which then creates active oxygen molecules that break down and neutralise contaminants.

They clean more, so you clean less.

6-Stage¹ filtration process

Cleaner² water means fewer water changes and less effort for you.

Stages 1 and 2

The skimmer and unique mesh ProCatch™ bag work together to clean the surface water and trap large debris for easy removal.

Stage 3

This exclusive system features a ProClear® filter, connected directly to a ProStream™ filtration pump, that filters an incredible 35 gallons per minute, giving you clean water, faster.

Stage 4

The ProClarity® polishing filter polishes the water down to a 3-micron level.

Stage 5

The ProClear filter activates and cleans when you are using the hot tub. This doubles the filtration when you need it most.

Stage 6

The ProClarity® filter on the ProStream™ circulation pump catches tiny debris and particles that other filters miss. This helps ensure clean, sparkling water.

1 Stages of filtration may vary by collection.
2 Clean is defined as the removal of microscopic (down to 3-micron level, varies by model) debris from the water.

The serenity is in the details

We design spas that run for years with minimal care. Durable, reliable, and built for your pleasure, from the quality of materials to the performance you expect.



A

ProLast™ cover

Lock heat in with our durable ProLast Cover. The vacuum seal retains heat and maintains water temperature longer for lower operating costs.

B

Illuminated waterfall

A cascading stream of water with soothing sounds creates a calming ambient atmosphere.

C

ProFusion™ shell

Highest-quality acrylic, a bonded vapor barrier, and a resin composite provide superior durability, even in extreme temperatures.

D

High-performance energy-saving insulation

Insulation surrounds the shell and fills the cabinet, resulting in lower operating costs, quieter operation, and reliable performance in the coldest climates.

E

Tool-free cabinetry

Durable, maintenance-free cabinetry withstands heat and cold and stays beautiful longer.

F

SmartTub®

Patented Cellular and WIFI smart technology for ease of hot tub control and management.

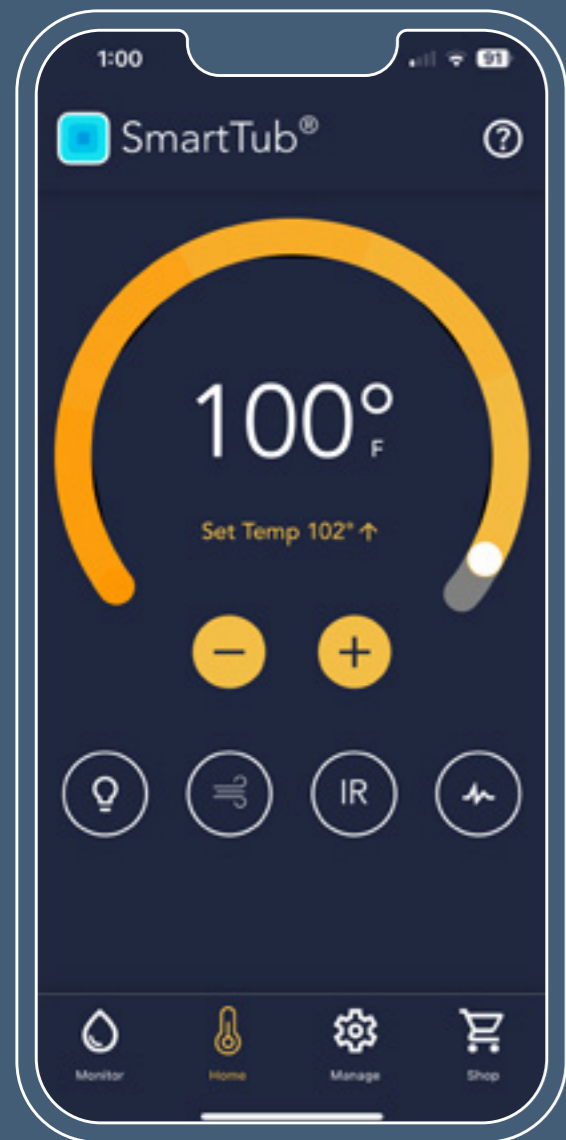
G

Propolymer base

This strong, rugged foundation protects and insulates the spa from moisture and the elements.

Tap into total relaxation

Our patented, industry-first SmartTub[®] system is more than an app. It's like a remote control and command centre that lets you monitor, operate, and protect your Jacuzzi[®] Hot Tub. It's the smartest and easiest way to use and care for your spa.



Control

You can adjust temperature, jets, and lights, and lock down your hot tub to prevent usage. Set up your own automated usage schedule, receive alerts, and check your hot tub status, whether you're at home or on the go.

Convenience

SmartTub provides remote monitoring and control anywhere in the world through smart phones, smart devices, and wearables, as well as AI helpers like Siri[®], Alexa[®], and Google Assistant[®].¹ You can also track energy usage reports and enjoy new features, which are updated automatically. Plus, SmartTub performs daily diagnostic checks to help ensure peak performance.

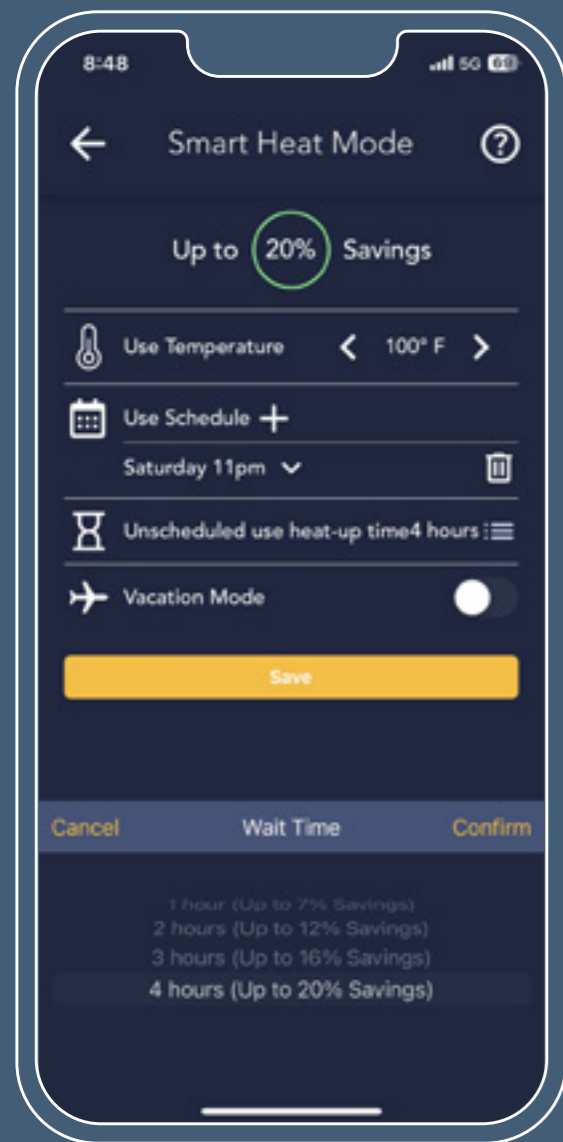


¹Siri, Alexa, and Google Assistant are registered trademarks of their respective owners.

Energy efficiency

Smart Heat Mode helps you optimize savings by using your hot tub in the most energy-efficient way possible, such as heating hot tub water during off-peak hours. It lets you monitor, track, and customize hot tub usage, and can reduce standby power up to 25%.

SmartTub® also dynamically calculates and displays real-time savings and includes a one-touch Vacation Mode that automatically minimizes water heating while you're away.



Peace of mind

With SmartTub, you can connect via cellular and use Wi-Fi as a backup. It chooses the best connection for you and switches when needed to ensure you have reliable connectivity in all environments and situations.

Integrated sensors send automatic alerts to you and your dealer if your hot tub needs attention. It can also detect power outages to help protect against freezing or overheating. SmartTub will even send maintenance reminders to keep your spa running optimally for years.

Enhanced 24/7 monitoring

Increase security and savings with our new wireless sensor package, including three sensors that trigger real-time alerts.

The Fill Sensor saves time by detecting when your hot tub has finished filling, draining, or when water level is too low. The Cover Sensor detects when cover is open so you don't run up your heating bill. The Water Sensor protects your investment by detecting when water is near sensitive hot tub equipment.





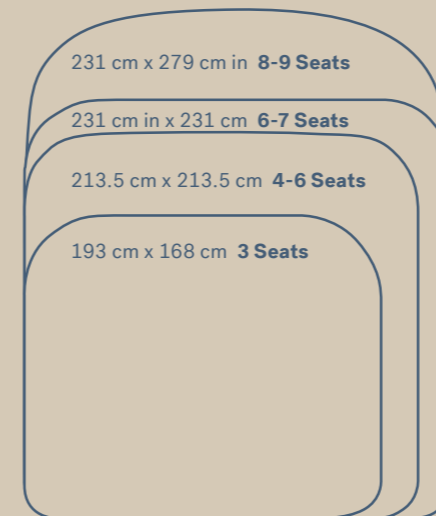
There's a Jacuzzi® Hot Tub for every kind of space

Is your dream hot tub area spacious or compact?

Whether it's placed indoors, outdoors, semi-sunken or even in-ground, a Jacuzzi® Hot Tub can be a soft addition, or the stunning centrepiece of your space.

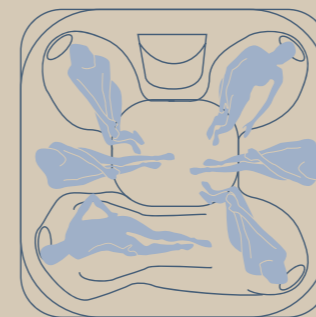
1

Select size and massage options
Good news! A hot tub with more massage combinations only requires a slightly larger garden footprint. In some cases, it's only a matter of a few extra centimetres.

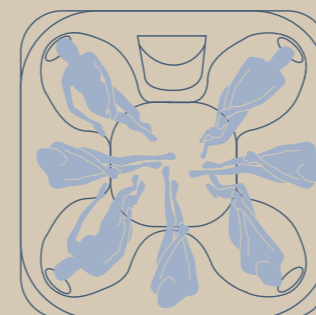


2

Choose Lounge vs. Open Seating
A lounge seat offers a full-body massage option and a more secluded spa experience.



An open seating model offers more massage options and makes it easier to communicate with one another.



3

Find the collection that's right for you

JLX®

Contemporary design, industry leading energy efficiency, and exclusive Infrared and Red Light therapy make the J-LX® Collection the ultimate wellness experience.

J-300™

Premium PowerPro® Jets, a unique Hydrosoothe™ massage pillow, and ergonomically-designed seating puts comfort at the forefront in our signature J-300™ Collection.

J-200™

Thoughtful jet placement, stylish cabinetry design, and Jacuzzi® renowned build quality makes the J-200™ Collection perfect for those looking for a great spa at everyday value.

J-400™

A distinct high-back design, our most advanced PowerPro® rotational jet technology, and exclusive Infrared and Red Light therapy make the J-400™ Collection one of our best hydromassage experiences.

J-LX® Collection

Clean, simple lines frame the welcoming water of our newest product family. With our patent-pending IR and Red Light therapy taking hydrotherapy to the next level, we're leading the industry once again, by creating the ultimate wellness experience.

J-LX®

IR + Red Light therapy included on all J-LX Collection Hot Tubs.

- J-LX® / J-400™ / J-300™
- J-300™ exclusive
- J-LX® / J-400™ exclusive
- IR + Red Light



J-LX®

Seats 6-7	Dimensions* Inches 89x89x34	Electrical 32A/40A
	Centimeters 226x226x87	
Dry Weight 388 kg	Total Filled Weight 2,052 kg	Average Spa Volume 1,249 litres

Jets



IR lights



J-LXL®

Seats 5-6 Lounge	Dimensions* Inches 89x89x34	Electrical 32A/40A
	Centimeters 226x226x87	
Dry Weight 388 kg	Total Filled Weight 2,098 kg	Average Spa Volume 1,249 litres

Jets



IR lights



IR + Red Light therapy

The FX-IR seat offers our most advanced hydrotherapy, combining full back and neck hydromassage with near Infrared and deep Red Light therapy on the lumbar region of the lower back.

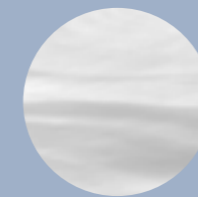


Full-featured modern design

The geometric form enhances your outdoor space with crisp lines and dramatic exterior lighting. Once inside, the gentle waterfall takes over your senses to round out a soothing transformational experience.

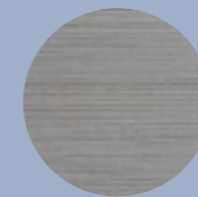


Interior

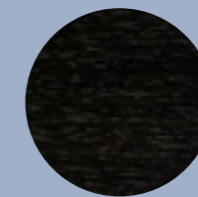


Platinum

Exterior

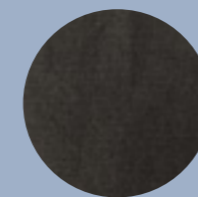


Brushed Gray



Smoked Ebony

Cover



Black

Standard features

- Exclusive Infrared + Red Light therapy
- SmartTub® system
- Jacuzzi® PowerPro® jets
- Specialty Jacuzzi® PowerPro® RX jets
- Individual seat air control
- Illuminated infinity-edge waterfall
- 5-stage filtration system
- ProStream™ filtration pump
- Floating propolymer foundation
- SmartSeal™ energy efficient insulation
- ProFinish® tool-free cabinetry
- ProLast™ cover in black
- Sleek, modern styling
- Premium LED interior lighting
- Wide deck with space for drinks
- Exterior lighting
- ProTouch™ control

1 All specifications are subject to change without notice. Hot tub dimensions are approximate and shown in L x W x H. The images are for layout reference; they do not reflect acrylic options. The product is shown with IR + Red Light therapy (standard).
2 Not all electrical configurations are listed. Please see the Jacuzzi® Specification Handbook for additional details.

J-400™ Collection

Elegant design and our most complete hydromassage experience combine with Infrared and Red Light therapy to create a retreat like no other. Graceful curves give rise to a high-back design and elevated waterfall that lend a dramatic presence to any space.

J-400™

IR + Red Light therapy included on all J-400 Collection Hot Tubs.

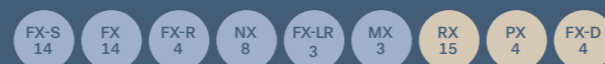
- J-LX® / J-400™ / J-300™
- J-300™ exclusive
- J-LX® / J-400™ exclusive
- IR + Red Light



J-495™

Seats	Dimensions*	Electrical
8-9	Inches 91x110x 37.5-43.5	32A/40A
	Centimeters 231x279x 95-110.5	
Dry Weight	Total Filled Weight	Average Spa Volume
495 kg	3,030 kg	1,893 litres

Jets



IR Lights



J-485™

Seats	Dimensions*	Electrical
7	Inches 91x91x 37.5-43.5	32A/40A
	Centimeters 231x231x 95-110.5	
Dry Weight	Total Filled Weight	Average Spa Volume
416 kg	2,421 kg	1,647 litres

Jets



IR Lights



J-475™

Seats	Dimensions*	Electrical
6 Lounge	Inches 91x91x 37.5-43.5	32A/40A
	Centimeters 231x231x 95-110.5	
Dry Weight	Total Filled Weight	Average Spa Volume
419 kg	2,444 kg	1,666 litres

Jets



IR Lights



¹ All specifications are subject to change without notice. Hot tub dimensions are approximate and shown in L x W x H. The images are for layout reference; they do not reflect acrylic options. The product is shown with IR + Red Light therapy (standard).
² Not all electrical configurations are listed. Please see the Jacuzzi® Specification Handbook for additional details.

- J-LX®/J-400™/J-300™
- J-300™ exclusive
- J-LX®/J-400™ exclusive
- IR + Red Light



J-445™

Seats 6	Dimensions* Inches 84x84x 37.5-43.5	Electrical 32A/40A
	Centimeters 213.5x213.5x 95-110.5	
Dry Weight 388 kg	Total Filled Weight 2,052 kg	Average Spa Volume 1,438 litres

Jets



IR Lights



J-435™

Seats 6 Lounge	Dimensions* Inches 84x84x 37.5-43.5	Electrical 32A/40A
	Centimeters 213.5x213.5x 95-110.5	
Dry Weight 373 kg	Total Filled Weight 2,037 kg	Average Spa Volume 1,363 litres

Jets



IR Lights



RX jets

Feel a powerful, steady rotation that provides full-coverage massage to relieve muscle tension, primarily in your middle and upper back.

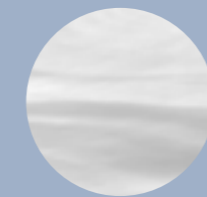


IR + Red Light therapy

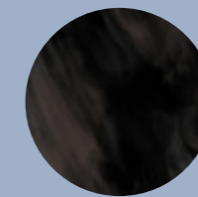
The FX-IR seat offers our most advanced hydrotherapy, combining full back and neck hydromassage with near Infrared and deep Red Light therapy on the lumbar region of the lower back.



Interior

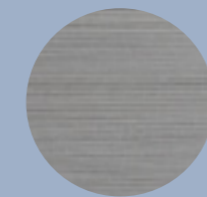


Platinum



Midnight

Exterior

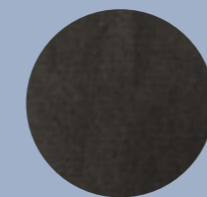


Brushed Gray



Smoked Ebony

Cover



Black

Standard features

- Exclusive Infrared + Red Light therapy
- SmartTub® system
- Jacuzzi® PowerPro® jets
- Specialty Jacuzzi® PowerPro® FX-D, RX, and PX jets
- Individual seat air control
- Adjustable headrests
- Elevated illuminated waterfall
- 5-stage filtration system
- ProStream™ filtration pump
- Floating propolymer foundation
- ProFinish® tool-free cabinetry
- ProLast™ cover in black
- Distinct high back design
- Premium LED interior lighting
- Illuminated drink holders
- Status indicator light
- Exterior lighting
- ProTouch™ control
- ProLast extreme cover
- SmartSeal™ insulation
- BLUEWAVE® stereo, premium speakers and amplified subwoofer

The images are for layout reference; they do not reflect acrylic options. The product is shown with IR + Red Light therapy (standard).
2 Not all electrical configurations are listed. Please see the Jacuzzi® Specification Handbook for additional details.

J-300™ Collection

Release yourself from the demands of the day and pause in the ultimate refuge. Experience the pleasure of industry-leading ergonomic seating and the power of perfectly placed jetting, both designed to raise your comfort level to new heights.



J-300™

IR + Red Light therapy included on all J-400 Collection Hot Tubs.

- J-LX®/J-400™/J-300™
- J-300™ exclusive
- J-LX®/J-400™ exclusive
- IR + Red Light



J-385™

Seats	Dimensions*	Electrical
7	Inches 91x91x 37.5	32A/40A
	Centimeters 231x231x95	

Dry Weight	Total Filled Weight	Average Spa Volume
386 kg	2,618 kg	1,741 litres

Jets



IR Lights

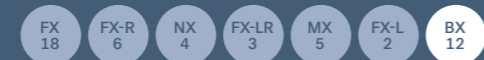


J-375™

Seats	Dimensions*	Electrical
6 Lounge	Inches 91x91x 37.5	32A/40A
	Centimeters 231x231x95	

Dry Weight	Total Filled Weight	Average Spa Volume
376 kg	2,571 kg	1,685 litres

Jets



IR Lights



J-365™

Seats	Dimensions*	Electrical
6	Inches 84x91x37.5	32A/40A
	Centimeters 213.5x231x95	

Dry Weight	Total Filled Weight	Average Spa Volume
365 kg	2,257 kg	1,495 litres

Jets



IR Lights



J-355™

Seats	Dimensions*	Electrical
6 Lounge	Inches 84x91x37.5	32A/40A
	Centimeters 213.5x231x95	

Dry Weight	Total Filled Weight	Average Spa Volume
369 kg	1,855 kg	1,363 litres

Jets



IR Lights



1 All specifications are subject to change without notice. Hot tub dimensions are approximate and shown in L x W x H. The images are for layout reference; they do not reflect acrylic options. The product is shown with IR + Red Light therapy (optional). If selected, the IR lights replace 2 of the jets, reducing the jet count.
2 Not all electrical configurations are listed. Please see the Jacuzzi® Specification Handbook for additional details.

- J-LX® / J-400™ / J-300™
- J-300™ exclusive
- J-LX® / J-400™ exclusive
- IR + Red Light



J-345™

Seats	Dimensions*	Electrical
7	Inches 84x84x36	32A/40A
	Centimeters 213.5x213.5x92	

Dry Weight	Total Filled Weight	Average Spa Volume
352 kg	2,036 kg	1,306 litres

Jets

FX-S
8

FX
19

FX-R
4

FX-LR
3

MX
3

FX-L
2

IR Lights

IR
2



J-335™

Seats	Dimensions*	Electrical
6 Lounge	Inches 84x84x36	32A/40A
	Centimeters 213.5x213.5x92	

Dry Weight	Total Filled Weight	Average Spa Volume
347 kg	2,125 kg	1,325 litres

Jets

FX
16

FX-R
4

FX-LR
4

MX
2

FX-L
2

BX
12

IR Lights

IR
2



J-332™

Seats	Dimensions*	Electrical
5	Inches 84x76x33.5	32A/40A
	Centimeters 214x214x93	

Dry Weight	Total Filled Weight	Average Spa Volume
376 kg	2,571 kg	1,685 litres

Jets

FX-S
4

FX
6

FX-R
2

FX-LR
5

FX-L
4

IR Lights

IR
2



J-325™

Seats	Dimensions*	Electrical
5	Inches 84x76x33.5	32A/40A
	Centimeters 213.5x193x85	

Dry Weight	Total Filled Weight	Average Spa Volume
281 kg	1,983 kg	1,268 litres

Jets

FX-S
4

FX
6

FX-R
2

FX-LR
5

FX-L
4

IR Lights

IR
2

1 All specifications are subject to change without notice. Hot tub dimensions are approximate and shown in L x W x H. The images are for layout reference; they do not reflect acrylic options. The product is shown with IR + Red Light therapy (optional). If selected, the IR lights replace 2 of the jets, reducing the jet count.
2 Not all electrical configurations are listed. Please see the Jacuzzi® Specification Handbook for additional details.

- J-LX®/J-400™/J-300™
- J-300™ exclusive
- J-LX®/J-400™ exclusive
- IR + Red Light



J-315™

Seats	Dimensions*	Electrical
3 Lounge	Inches 66x76x31.75	32A/40A

Centimeters
168x193x80.65

Dry Weight	Total Filled Weight	Average Spa Volume
241 kg	1,300 kg	795 litres

Jets



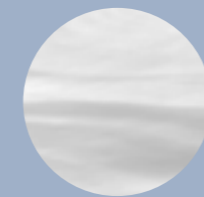
Jacuzzi® PowerPro® jets
Minimise tension as you maximise propulsion. Up to eight varieties of Jacuzzi® PowerPro® jets deliver a superior hydromassage.



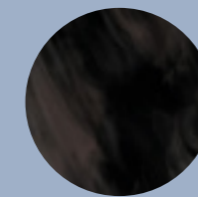
ProTouch™ controls
Create the spa experience you want using simple, intuitive controls. Easily make quick adjustments to hydrotherapy and lighting settings.



Interior

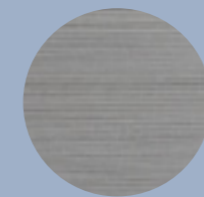


Platinum



Midnight

Exterior

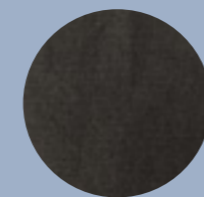


Brushed Gray



Smoked Ebony

Cover



Black

Standard features

- Jacuzzi® PowerPro® jets
- Specialty Jacuzzi® PowerPro® BX jets
- Individual seat air control
- Illuminated waterfall
- Hydrosoothe® massage pillow
- ClearRay Active Oxygen® system
- ProStream™ filtration pump
- Floating propolymer foundation
- ProFinish® tool-free cabinetry
- ProLast™ cover in black
- LED interior lighting
- Illuminated drink holders
- Exterior lighting
- ProTouch control
- Exclusive Infrared + Red Light therapy¹
- SmartTub® system
- ProClarity® polishing filter²
- ProLast extreme cover
- SmartSeal™ insulation
- BLUEWAVE® stereo, standard speakers and subwoofer

¹ All specifications are subject to change without notice. Hot tub dimensions are approximate and shown in L x W x H. The images are for layout reference; they do not reflect acrylic options. The product is shown with IR + Red Light therapy (optional). If selected, the IR lights replace 2 of the jets, reducing the jet count.
² Not all electrical configurations are listed. Please see the Jacuzzi® Specification Handbook for additional details.

J-200™ Collection

Pleasing aesthetics, rejuvenating hydromassage, and legendary comfort are what Jacuzzi is famous for, and that sets the foundation for our most affordable hot tubs. Take a seat and enjoy the view from this warm-water escape.

J-200™



J-285™

Seats 7	Dimensions* Inches 89x89x36	Electrical 32A/40A
	Centimeters 226x226x91	

Dry Weight 352 kg	Total Filled Weight 2,225 kg	Average Spa Volume 1,382 litres
-----------------------------	--	---

Jets
42



J-275™

Seats 6 Lounge	Dimensions* Inches 89x89x36	Electrical 32A/40A
	Centimeters 226x226x91	

Dry Weight 347 kg	Total Filled Weight 2,125 kg	Average Spa Volume 1,363 litres
-----------------------------	--	---

Jets
38



J-245™

Seats 7	Dimensions* Inches 84x84x36	Electrical 32A/40A
	Centimeters 213x213x91	

Dry Weight 325 kg	Total Filled Weight 1,971 kg	Average Spa Volume 1,211 litres
-----------------------------	--	---

Jets
37



J-235™

Seats 6 Lounge	Dimensions* Inches 84x84x36	Electrical 32A/40A
	Centimeters 213x213x91	

Dry Weight 329 kg	Total Filled Weight 1,918 kg	Average Spa Volume 1,155 litres
-----------------------------	--	---

Jets
34

1 All specifications are subject to change without notice. Hot tub dimensions are approximate and shown in L x W x H. The images are for layout reference; they do not reflect acrylic options. The product is shown with IR + Red Light therapy (optional). If selected, the IR lights replace 2 of the jets, reducing the jet count.
2 Not all electrical configurations are listed. Please see the Jacuzzi® Specification Handbook for additional details.



J-225™

Seats 4	Dimensions* Inches 80x80x33	Electrical 32A/40A
	Centimeters 203x203x84	

Dry Weight 281 kg	Total Filled Weight 1,726 kg	Average Spa Volume 1,060 litres
-----------------------------	--	---

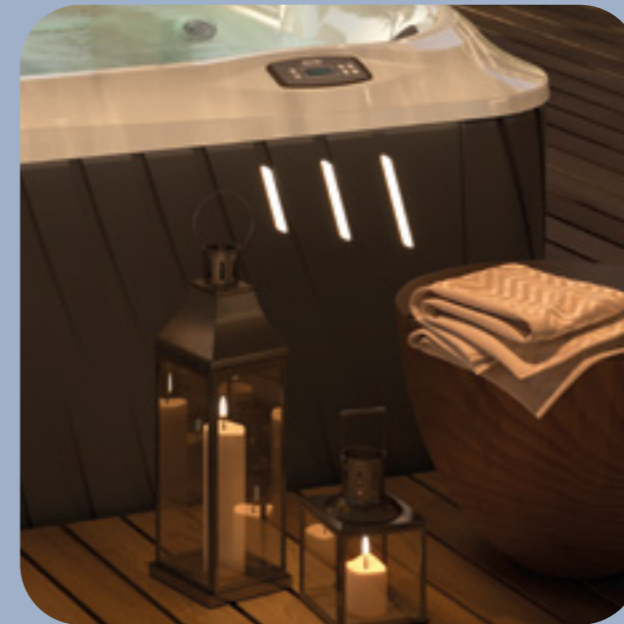


J-215™

Seats 3 Lounge	Dimensions* Inches 69x80x33	Electrical 32A/40A
	Centimeters 175x203x84	

Dry Weight 235 kg	Total Filled Weight 1,332 kg	Average Spa Volume 776 litres
-----------------------------	--	---

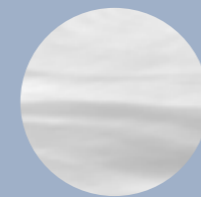
Tool-free cabinetry
Distinctive styling. Durable construction. With integrated exterior LED lighting and tool-free access for ease of use.



Illuminated waterfall
Add a touch of calming ambience with the soothing sound of moving water, backlit for a glowing waterfall effect. Included on select models.



Interior

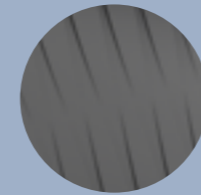


Platinum



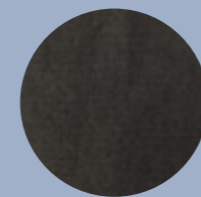
Midnight

Exterior



Charcoal

Cover



Black

Standard features

- Proprietary jets with stainless steel accent
- Illuminated waterfall¹
- Backlit headrests
- 3-stage filtration system
- ClearRay® UV-C system
- ProClassic™ filter
- Propolymer foundation
- Tool-free cabinetry
- ProLast™ cover in black
- LED interior lighting
- Built-in drink holders
- Exterior lighting
- ClearRay Active Oxygen® water system
- SmartTub® system compatible
- ProLast extreme cover

¹ See model details. Available on J-200™ models 5-6 seats and larger.

¹ All specifications are subject to change without notice. Hot tub dimensions are approximate and shown in L x W x H. The images are for layout reference; they do not reflect acrylic options. The product is shown with IR + Red Light therapy (optional). If selected, the IR lights replace 2 of the jets, reducing the jet count.
² Not all electrical configurations are listed. Please see the Jacuzzi® Specification Handbook for additional details.

This is what you've been waiting for

We've worked hard to make choosing your hot tub easy, by offering a line of spas for every backyard style and budget. No matter which collection you decide on, our focus on quality and design will ensure you enjoy your hot tub for years to come.

	J-LX® Collection	J-400™ Collection	J-300™ Collection	J-200™ Collection
IR and Red Light therapy	•	•	•	
SmartTub® system	•	•	•	•
Jacuzzi® PowerPro® jets	•	•	•	
Individual seat air control	•	•	•	
Illuminated waterfall	•	•	•	
Headrests	•	•	•	•
5-stage ProClarity® filtration system	•	•		
ProClear® filter	•	•	•	•
ClearRay Active Oxygen® system	•	•	•	•
ProStream™ filtration pump	•	•	•	
Propolymer foundation	•	•	•	
SmartSeal™ insulation	•	•	•	
Tool-free cabinetry	•	•	•	•
Interior lighting	•	•	•	•
Exterior lighting	•	•	•	•
Drinks holder	•	•	•	•
ProLast™ cover	•	•	•	•
Touch screen controls	•	•	•	
BLUEWAVE® stereo	•	•	•	
Warranty coverage (years)				
Shell structure	10	10	10	10
Shell surface	7	7	7	7
Equipment, controls and plumbing	5	5	5	3
Cabinet	5	5	5	1

*Please see warranty cards for full warranty details



The most extraordinary pause in the world.®



Wellness starts with a world that is well.
Learn more about our sustainability commitments.

Feel yourself transformed.
Immerse yourself in the
experience that made
us a household name.

Feel a weight lift at the
mere thought of warm,
bubbling water.
Let stress wash away
as you step in.

Emerge rejuvenated,
to take on the day.
And let the long-lasting,
refreshing energy transform
your body and mind.



www.jacuzzi.com

Jacuzzi Spa and Bath Ltd
Jacuzzi Group Head Office
8 Turnberry Park Road
Gildersome, Morley
Leeds LS27 7LE

HTBROCHURE25