



HYDROPOOL
hot tubs • swim spas
hydropoolhottubs.com

The Water is Calling

The power of water

It feels like life is more hectic than it's ever been. Families always trying to balance their goals and dreams with the responsibilities of everyday life. It's all part of the journey to a life well-lived.

MAYBE THAT'S WHY WE'RE SO DRAWN TO WATER.

70% of the world population lives within 100 km's (62 miles) of water. We seek it out for our vacations and our summer getaways. Water is life's game changer.

There's something magical, even magnetic, about it. It can be playful & lively when life gets a bit heavy, but it can also soothe even the most weary bones. We feel a sense of freedom when we're around it, but it also has the power to bring a whole family together. On our worst days, we can literally hear the water calling to us.

At Hydropool we understand the power of water and the role it can play in living our best life. That's why we've made it our mission to harness the magical, magnetic power of water with innovation, creativity & imagination built into all of our hot tubs and swim spas. The perfect ingredient for training or just staying fit, for reconnecting, having some fun or a relaxing moment at the end of the day.

HYDROPOOL HOT TUBS. THE WATER IS CALLING.





Our history with water

Over 40 years ago a father and son had a vision of how the power of water could play an instrumental part in a family's everyday life. With their extensive background in swimming pools they decided to expand to include both Hot Tubs and Swim Spas.

They first started as retailers with a company called California Spa, Sauna and Fitness in 1978. This was the first retailer of hot tubs in Eastern Canada. It was there Dale and Fred developed their love for the retail side of the business.

Realizing the potential of Hot Tubs, they then formed Hydropool in 1980. Hydropool, quickly became one of the largest manufacturers of hot tubs in North America. In 1995, Hydropool saw the potential of swim spas, and started to manufacture the AquaTrainer. Hydropool's growth worldwide has reached over 400 independent retailers in 60 countries.

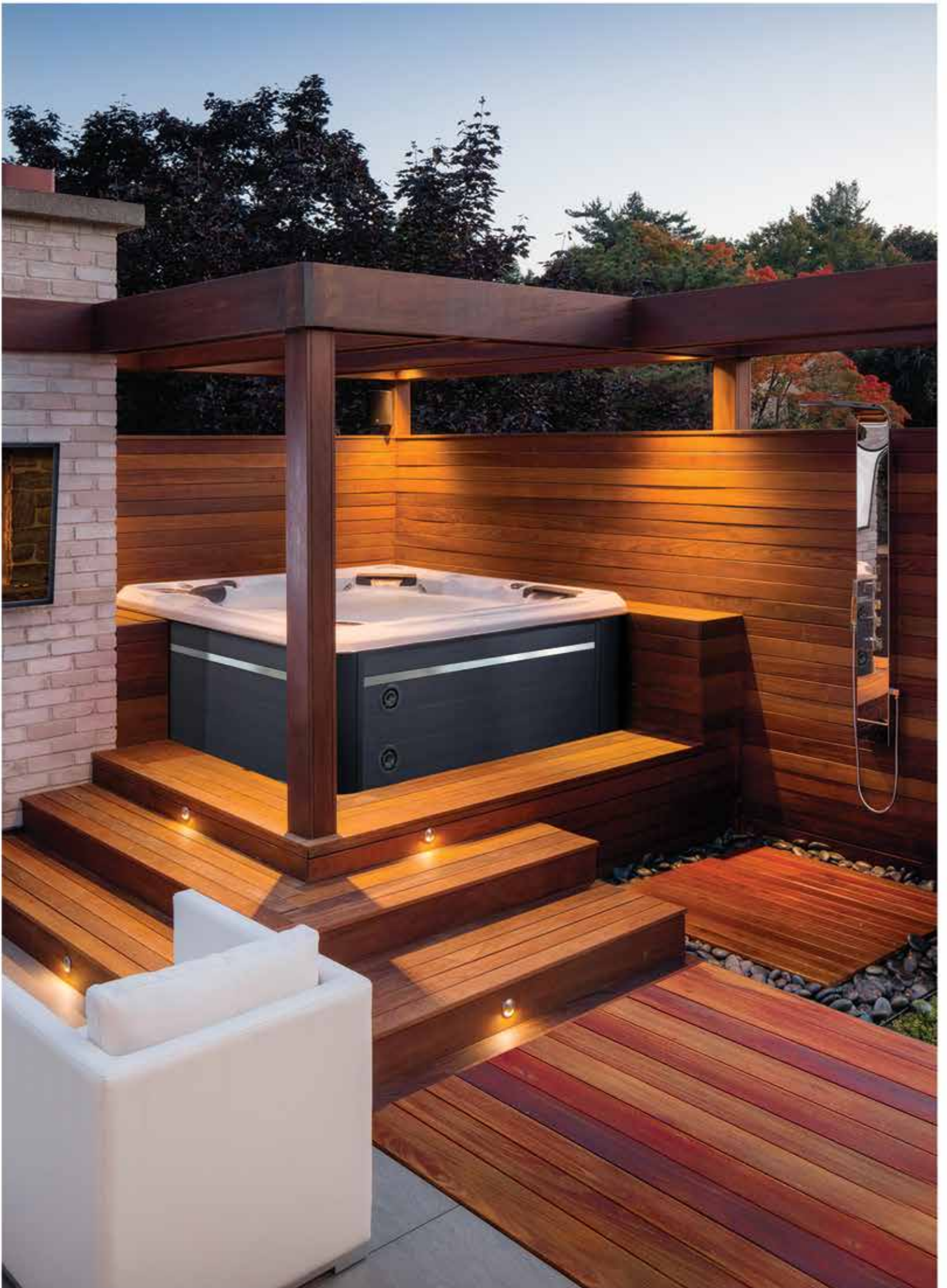
Hydropool recently added a new 66,000 sq. ft. swim spa manufacturing facility and a new 101,000 sq. ft. parts distribution warehouse which allows Hydropool to continue to expand to meet all our consumers needs. Each of our retailers are professionally trained to assist in the proper selection of the ideal hot tub or swim spa to match your needs based on your budget and stated lifestyle.

Hydropool Hot Tubs and Swim Spas are manufactured in Mississauga Ontario Canada by experienced designers and engineers, ensuring that we continue to exceed our customer's expectations. At Hydropool our success depends on the customer.



HYDROPOOL
hot tubs • swim spas

THE WATER IS CALLING.



What makes Hydropool different?

START YOUR DAY OFF RIGHT

Imagine how much better your day will start when you slip into your own Hydropool Self-Cleaning Hot Tub for a few minutes each morning. Your blood circulation will improve, muscles will relax and feel better. Your state of mind will be enhanced and you will be better prepared to face your day at work or a round of golf.

RELIEVE STRESS AND RELAX

When you're relaxing, you enjoy life more. It is easier to converse, share intimacies, smile and laugh. You'll look forward to your times in your hot tub. Hydropool Self-Cleaning Hot Tubs are also great for entertaining. Your guests will leave with fond memories of the time spent with you in your hot tub.

SOOTHE THOSE TIRED AND ACHING MUSCLES

The heat of your Hydropool Self-Cleaning Hot Tub results in collagen tissue becoming more flexible, benefiting many people with arthritic symptoms. Doctors have advised people with arthritis that soaking in warm water several times a day relaxes muscles and joints and helps induce restful sleep. The resulting stress and muscle tension relief has also led many migraine sufferers to claim that hot tub use reduces the frequency and severity of their headaches.

SLEEP BETTER

The heat improves blood circulation, provides tension relief, and quicker lactic acid removal creating a comforting state of relaxation and tranquility, assisting you to sleep better at night.

"We call our hot tub Hydropool Heaven, after a long hard day at the office it's great coming home to our little piece of heaven."

BRIAN & WENDY CHIN QUAN,
PROUD OWNER'S OF A HYDROPOOL HOT TUB



For the creatures of comfort

Once you've submersed yourself in the water of a Hydropool hot tub, you'll quickly feel everything has been designed with your comfort in mind. The superior ergonomic design means that all seating has been designed for full body support and comfort. From our unique, multi-level seating architecture right down to the extra large foot wells, you'll see how easy it is to stretch out, relax and enjoy. Deep bucket seats, higher cool down seats, comfortable bench seats and body form loungers gives everyone a seat of choice. Comfortable pillows gently support your head and neck while our wide lumbar support seats cradle your body. And we top it all off with a conveniently placed ice bucket for just the right occasion.

Our ergonomically designed Never-Float lounger and convenient built-in ice bucket with lid.



Our multi-level seating has been ergonomically designed with recessed jetting and spacious foot wells.







State of the art design

Hydropool is one of the largest hot tub manufacturer's in the world. We are committed to raising the standards of our industry by building superior hot tubs utilizing the latest technologies, with the most current environmental practices. Our research and development team is always striving to be the leading edge of innovation and design.



Our state-of-the-art equipment includes the patented Self-Cleaning™ System, HydroWise System, our IA Pump Base® and Dreamscent® technology.



All built into our self-supporting cradle and truss design that comes with a 10-year worry-free structural guarantee.



Every Hydropool Hot Tub comes with optimized hydraulics and safety steps inside the hot tub.





THE SCIENCE OF IMMERSION



Let's talk about the science of immersion

Much like an iceberg, there's a lot going on below the surface of a Hydropool Hot Tub. With a vast array of science to support and develop our programs, our Zone Therapy has been designed to provide you with a personalized usage map of your hot tub to help you benefit from a general sense of well-being.

Everyone is different and responds in different ways to hydrotherapy, so we've created an easy-to-understand summary of the four key elements that make-up each zone so you can get the most out of your time in your hot tub.

Key elements

There are four elements that make up each zone.



Type of jets

The type of jet is crucial to a proper massage. Our P-Class Jets are designed purposely for a deep tissue massage and our L-Class Jets are designed for a gentle massage.



Seating designed around you

Our specially designed seating has been built to work with your body's natural structure and functions to provide maximum comfort and functionality. Our ergonomic support cradles your skeletal structure so that the muscular system doesn't have to, allowing us to remove stress from your muscles and joints so that your body can relax.



Jet placement

Our Hydrotherapy jets are specifically designed for each zone so that the superior benefits of hydrotherapy are achieved. Different jet patterns are designed to work different muscle groups.



Duration in seat

The last component of Zone Therapy is up to you. The duration of time that you spend in each seat of the hot tub can optimize your treatment. The duration in seat combined with the sequence of seats is critical to the performance of the Zone Therapy.

How does zone therapy work?

Through our solid understanding of Zone Therapy and ergonomics of the human body, Hydropool has taken the science of immersion to the next level. This constant innovation has created a line of hot tubs that allows Zone Therapy to interact with the human body in the most natural and effective way possible.

ZONE 1 CORE ZONE

Activation of paravertebral muscles

Vertebral (meaning your spine) fatigue can contribute to headaches. Zone Therapy is designed to release tension in your dorsal muscles which can help to relax around your vertebrae.

ZONE 2 OVERALL BODY ZONE

Activation of leg and lumbar muscles

This zone helps to promote improved circulation in lower part of the body which allows for venous return. (or blood flow) & lightens legs.

ZONE 3 UPPER BODY ZONE

Activation of upper back, neck & shoulder muscles

This zone eliminates tension in trapezoid muscles and neck, specifically releasing tensions in solar plex area.

ZONE 4 REFLEXOLOGY ZONE

Activation of foot arch muscles

With our feet playing such a critical role in our overall physical health and take the brunt of most sports this zone is designed to deeply massage the small venous areas in your foot arch.



Hot tub zones:

ZONE 1

Core Zone

ZONE 4

Reflexology

ZONE 3

Upper Body

ZONE 2

Overall Body



Immersion therapy:

COLOR THERAPY

COLOR THERAPY

HYDROVORTEX

AIR THERAPY



Our customized wellness programs

One of the powerful benefits of living life around water is hydrotherapy. Hydropool has been innovating in this area for over 40 years and has developed customized wellness programs designed to help our customers with whatever ails them. Our easy-to-use topside controls allow you to achieve the desired results all at the touch of a button.



1) LEG PAIN

Treatment Program

Get back and on your feet again with our 25 Minute Program that uses three zones targeting core leg muscles to massage tightness and soothe joints.

We recommend adding optional Air Therapy and our DreamScent Aromatherapy with scents like Bergamot & Lemongrass or Tangerine & Grapefruit.



2) DIET BOOST

Treatment Program

Compliment a healthy eating plan with our 30 Minute Program that uses three zone targeting.

We recommend our DreamScent Aromatherapy with scents like Tangerine & Grapefruit.



3) HEADACHE

Treatment Program

Don't let a headache slow you down. Our 20 Minute Program uses three zones that target neck and shoulder muscle that play a critical role in easing head pain.

We recommend adding optional Air Therapy and our DreamScent Aromatherapy with scents like Ylang Ylang or Tangerine.



4) STRESS

Treatment Program

Life is more hectic than ever so its easy to let stress build up. Our 25 Minute Program uses three zone that targeting.

We recommend adding our DreamScent Aromatherapy with scents like Bergamot & Lemongrass or Ylang Ylang



5) BACK PAIN

Treatment Program

Stand strong with our 25 Minute Program that uses three zones targeting both upper and lower back muscles to massage away tightness.

We recommend adding our DreamScent Aromatherapy with scents like Ginger or Spearmint & Eucalyptus.



6) SPORTS RECOVERY

Treatment Program

Quick recovery from your training has been proven to increase performance.

Our 35 Minute Program uses three zone targeting.

We recommend adding optional Air Therapy and our DreamScent Aromatherapy with scents like Spearmint & Eucalyptus or Ginger.



7) INSOMNIA

Treatment Program

A good sleep is critical to a healthy and productive life. Our 20 Minute Program uses three zones that relax and soothe muscles and mind.

We recommend adding our DreamScent Aromatherapy with scents like Chamomile or Bergamot & Lemongrass.



8) FULL BODY AWAKENING

Treatment Program

Awaken all your senses with our quick 10 Minute Program that uses two zones to target.

We recommend adding optional Air Therapy and our DreamScent Aromatherapy with scents like Ginger or Ylang Ylang.



HYDROPOOL EXCLUSIVE FEATURE



Our Exclusive Self-Cleaning Technology

We know that one of the big challenges for our customers is the time they need to invest in maintenance. Now, with our patented Self-cleaning technology, Hydromax has created the world's easiest hot tub to maintain.

The Self-Cleaning System cleans 100% of the water in only 15 minutes, that's an incredible 8 times in 2 hours!

Let's be clear, this is not a simple vacuum for your hot tub, it's innovation throughout the entire system.

1. HydroClean Filtration Jets. OPTIMIZED SURFACE FILTRATION:

The design of our seating and the strategically placed jets create a continuous flow of water that pushes all floating debris towards the high flow skimmer, boosting the efficiency of our self-cleaning system.

2. High Flow Skimmer & Pre-filter TOTAL SURFACE CLEANING:

Our specially designed seating is built to work with your High Flow skimmer and pre-filter removing floating debris and oils. Also preventing larger debris from clogging the pump and heater, which increases filtration and moves debris into the Pre-Filter and extends micro-filter cleaning cycles.

3. HydroClean Floor Vacuum DEEP FLOOR CLEANING:

There's no need to vacuum your hot tub and watercare products are more effectively circulated. Thus removing heavy contamination (such as dirt & grit) right down to the floor.

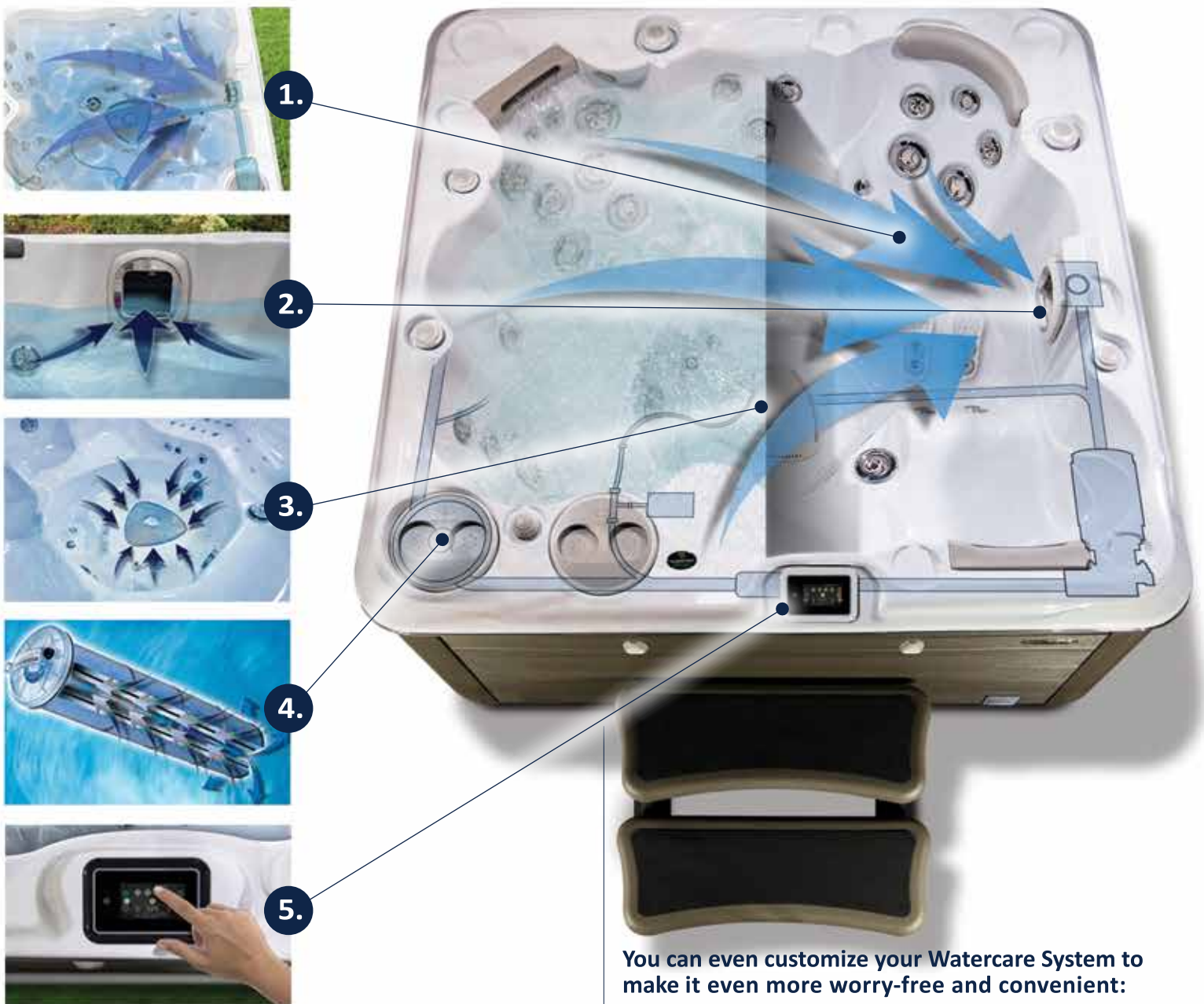
4. Pressurized Micro-Filtration CLEANS 100% OF THE WATER EVERY 15 MINUTES.

HydroClean Filter was built to make cleaning easy resulting in extended cleaning cycles and easy to access while out of contact and sight of bathers. Plus no odour escapes during hot tub use.

5. Self-Clean Indicator ALWAYS ON THE JOB:

Our worry-Free Indicator indicates the Self-Clean and EcoHeat Exchange system are both active, reassuring your family's safety and protection.

And to make draining your water when you need to easy and hassle free, we've developed the Quick Drain System. There's no Sump pump, it just pumps the hot tub water out to any distance or grade which saves time. Eliminating the hassle associated with hot tub maintenance.



You can even customize your Watercare System to make it even more worry-free and convenient:

• Hydropool PureWater System • Automatic Chemical Feeder



Our PureWater System

We don't take the power of water lightly and to us, it's a precious commodity so we've gone out of our way to create the most efficient water purification system in the world. The combination of our PureWater System and our Self-Cleaning technology gives you a system to maintain and manage your water that's automatic.

The PureWater System is the most efficient water purification system in the world. It combines the Self-Cleaning technology with UV and Ozone Water treatments, eliminating 99% of all contaminants.



Here's how we make it happen:

1) MICRO CELL OZONE PURIFICATION:



The water in your hot tub continuously passes through the patented Micro Cell that treats it with Ozone, which is nature's oxidizer. This simple, but highly effective rapid oxidation process reduces chemical usage by 50%.

2) EXPOSURE TO UV LIGHT:



The Ozone treated water then passes through an ultraviolet light Chamber exposing it to a high volume of UVC light, purifying it even further.

This combination of advanced purification using UV and Ozone, creates active oxygen in the PureWater System which removes any Calcium and Biofilm inside pipes.

All of this reduces the need to shock your hot tub water as the PureWater System eliminates 99% of all contaminants. Our PureWater system is on when your hot tub is circulating and our Quick Diagnostics shows everything is in working order. That means it's time to sit back and let the HydroClear PureWater System do its work.





Energy Efficiency beyond compare

One of the most frequent questions we're asked is around the cost to keep your hot tub at those ideal temperatures (around 100° F/37° C).

Well, thanks to our innovative HydroWise Thermal Shield Energy Efficient Insulation along with our superior 4 inch HydroWise Hard Cover, we've mastered the art of keeping the heat in and the cold out. Combine this with the fact that our hot tubs are engineered to be the most energy efficient in the world, that means you can enjoy your hot tub for just pennies a day.

So how do we do it?

ENERGY EFFICIENT FILTRATION

Your Hydropool hot tub filters 100% of the water in only 15 minutes. This means the hot tub does not have to be operating as long to filter the same amount of water as other hot tubs. The most energy efficient filtration system in the world.

Our Low Amperage Evergreen Pump are designed as a high flow low energy pump engineered to produce high flow rates with low energy consumption. This means our Hydropool filtration pump is 26% more efficient than the competition.





HYDROWISE HEAT SHIELD HARDCOVER

Made for Canadian Winters and inspired by NASA technology. The Heavy Duty tapered locking safety hardcover has an insulated baffle in the fold area that locks the heat in and the cold out.

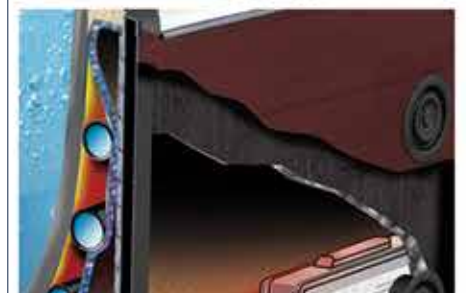
INSULATED THERMAL SHIELD BLANKET

The Triple Thermal Shield Technology (pipes, cabinet and floor) employs a reflective foil on the hot tub side that reflects the heat back into the hot tub and a black side on the outside of the pipes that's designed to absorb heat.


ECOHEAT EXCHANGE TECHNOLOGY

Fully adjustable venting. Each pump creates 1.5 kw of waste heat and our Double Thermal Shield blanket reflects that heat back into our hot tub cavity. HydroWise Thermal vents maximize energy efficiency for any season and any climate.

All of the technology has been designed to exceed California Regulations which are some of the stiffest regulations in the world. All Hydropool products are TUV and CE certified. We are literally setting the standard. Hydropool is ranked one of the top in the world for "stand-by" wattage and energy efficiency and one of the first to be approved under the strict State of California Guidelines.





A photograph of a person's arm reaching into a pond. The arm is on the left side of the frame, with the hand touching the water. Several large green lily pads are visible in the foreground and middle ground. The water is calm with gentle ripples. In the background, a distant shoreline with trees is visible under a bright, hazy sky. A dark blue rectangular box is centered over the image, containing white text.

—
NOTHING IS
SOFTER OR
STRONGER
THAN WATER
THAT IS OUR
SIGNATURE
—

Signature Self-Cleaning Hot Tub Collection

If only it could clean the house, too!

The Signature Self Cleaning Collection is the culmination of 40 years of Hydropool innovation as an industry leader. A host of exclusive features gives you the ultimate Hot Tub experience with unique hydrotherapy massage and wellness programs, Self Cleaning System, plus money saving energy efficiency. With nine spa models to choose from and a wealth of finishing options, you'll find a Hot Tub that fits your space and style.



At a glance...

MODEL 395



GOLD SERIES:
30" DEEP MODEL:
SEATING: 3 Person
TOTAL THERAPY JETS: 30

37" DEEP MODEL:
SEATING: 3 Person
TOTAL THERAPY JETS: 30

MODEL 495



37" DEEP MODEL:
SEATING: 4 Person
GOLD SERIES:
TOTAL THERAPY JETS: 30
PLATINUM SERIES:
TOTAL THERAPY JETS: 40

MODEL 570



37" DEEP MODEL:
SEATING: 4-5 Person
GOLD SERIES:
TOTAL THERAPY JETS: 30
PLATINUM SERIES:
TOTAL THERAPY JETS: 40

MODEL 670



39" DEEP MODEL:
SEATING: 5-6 Person
GOLD SERIES:
TOTAL THERAPY JETS: 35
PLATINUM SERIES:
TOTAL THERAPY JETS: 50

MODEL 695



39" DEEP MODEL:
SEATING: 5-6 Person
GOLD SERIES:
TOTAL THERAPY JETS: 35
PLATINUM SERIES:
TOTAL THERAPY JETS: 50

MODEL 720



39" DEEP MODEL:
SEATING: 6-7 Person
PLATINUM SERIES:
TOTAL THERAPY JETS: 55

MODEL 770



39" DEEP MODEL:
SEATING: 6-7 Person
PLATINUM SERIES:
TOTAL THERAPY JETS: 55

MODEL 790



39" DEEP MODEL:
SEATING: 6-8 Person
PLATINUM SERIES:
TOTAL THERAPY JETS: 60

MODEL 970



39" DEEP MODEL:
SEATING: 8-10 Person
TITANIUM SERIES:
TOTAL THERAPY JETS: 70



SIGNATURE SELF-CLEANING HOT TUB MODEL 395

Specifications:	
Series	Gold
Freeze Protection	Yes
Self Clean Mode	Yes
HydroClean Floor Vacuum	Yes
HydroClean Pressurized Filter	Yes
Programmable Filtration Cycles	Yes
Deluxe LED & Garden FX Lighting	Opt
Total Therapy Jets	30
HydroSequence Massage	N/A
HydroVortex Jet	Yes
HydroClean Filtration Pump	Yes
North American 60Hz	4hp
International 50Hz	4hp
Stainless Steel HydroWise Heater NA	4Kw
Stainless Steel HydroWise Heater EU	3Kw
Mazzei Injected Ozonator	Opt
HydroFlex Foot Massage	Yes

30" DEEP MODEL SPECS.

SEATING: 3 Person

OUTER DIMENSIONS: 85" x 65" x 30"*
(215.9 cm x 165.1 cm x 76.2 cm)*

VOLUME: 198 US gal / 753 L

WEIGHT FULL: 2,241 lbs / 1017 kg

37" DEEP MODEL SPECS.

SEATING: 3 Person

OUTER DIMENSIONS: 85" X 65" X 37"*
(215.9 cm X 165.1 cm X 93.98 cm)*

VOLUME: 217 US gal / 825 L

WEIGHT FULL: 2,441 lbs / 1,108 kg

* +/- tolerance of 1/4"

Model 395 Gold in Silver Marble shown here.

HYDROGUIDE

SELF-CLEANING MODEL 395

This hot tub meets or exceeds the energy efficiency standards defined by the state of California.

N. American Wattage / 100 Gallons: 14 W

AMBIENT OUTDOOR TEMPERATURE:	MONTHLY COST:
LOW: 45° F / 7° C	\$13.95
HIGH: 75° F / 24° C	\$6.30

European Wattage / 100 Gallons: 33.67 W

The ultimate in style and function. With room for up to three adults, the 395 Self-Cleaning Hot Tub offers a low profile that makes it easy to enter and exit. This compact hot tub fits perfectly into a corner of a cozy patio. With seats that offer a variety of unique jet formations, you can relieve tired muscles, ease stress and release tension every day. A multi-color LED footwell also adds ambiance to your hydrotherapy experience.



SIGNATURE SELF-CLEANING HOT TUB MODEL 495

Specifications:			
Series	Gold	Platinum	
Freeze Protection	Yes	Yes	
Self Clean Mode	Yes	Yes	
HydroClean Floor Vacuum	Yes	Yes	
HydroClean Pressurized Filter	Yes	Yes	
Programmable Filtration Cycles	Yes	Yes	
Deluxe LED & Garden FX Lighting	Opt	Opt	
Total Therapy Jets	30	40	
HydroSequence Massage	N/A	Opt	
HydroVortex Jet	Yes	Yes	
HydroClean Filtration Pump	Yes	Yes	
North American 60Hz	4hp	3hp & 4hp	
International 50Hz	4hp	3hp & 4hp	
Stainless Steel HydroWise Heater NA	4Kw	4Kw	
Stainless Steel HydroWise Heater EU	3Kw	3Kw	
Mazzei Injected Ozonator	Opt	Opt	
HydroFlex Foot Massage	Yes	Yes	

37" DEEP MODEL SPECS.

SEATING: 4 Person

OUTER DIMENSIONS: 79" x 75" x 37"*
(200.66 cm x 190.5 cm x 93.98 cm)*

VOLUME:

278 US gal / 1,055 L

WEIGHT FULL:

2,980 lbs / 1,352 kg

* +/- tolerance of 1/4"

Model 495 Platinum in Silver Marble shown here.

HYDROGUIDE

SELF-CLEANING MODEL 495

This hot tub meets or exceeds the energy efficiency standards defined by the state of California.

N. American Wattage / 100 Gallons: 15 W

AMBIENT OUTDOOR TEMPERATURE:	MONTHLY COST:
LOW: 45° F / 7° C	\$14.66
HIGH: 75° F / 24° C	\$6.62

European Wattage / 100 Gallons: 39.56 W

The Absolute Best Hot Tub Ownership Experience in a small 4-person package. The 495 Self-Cleaning Hot Tub offers the ultimate in energy efficiency and is combined with our wellness programs and our science of immersion. It is, without a doubt, the best hydrotherapy experience in a hot tub.





SIGNATURE SELF-CLEANING HOT TUB **MODEL 570**

Specifications: Series	Gold	Platinum
Freeze Protection	Yes	Yes
Self Clean Mode	Yes	Yes
HydroClean Floor Vacuum	Yes	Yes
HydroClean Pressurized Filter	Yes	Yes
Programmable Filtration Cycles	Yes	Yes
Deluxe LED & Garden FX Lighting	Opt	Opt
Total Therapy Jets	30	40
HydroSequence Massage	N/A	Opt
HydroVortex Jet	Yes	Yes
HydroClean Filtration Pump	Yes	Yes
North American 60Hz	4hp	3hp & 4hp
International 50Hz	4hp	3hp & 4hp
Stainless Steel HydroWise Heater NA	4Kw	4Kw
Stainless Steel HydroWise Heater EU	3Kw	3Kw
Mazzei Injected Ozonator	Opt	Opt
HydroFlex Foot Massage	Yes	Yes

37" DEEP MODEL SPECS.

SEATING: 4-5 Person

OUTER DIMENSIONS:

80" x 80" x 37"*

(203.2 cm x 203.2 cm

x 93.98 cm)*

VOLUME:

295 US gal / 1,119 L

WEIGHT FULL:

3,143 lbs / 1,426 kg

* +/- tolerance of 1/4"

Model 570 Platinum in Silver Marble shown here.

The 570 Self-Cleaning Hot Tub incorporates a never-float lounger, four full seats along with easy access non-slip steps built right into the interior.

This is one of our best selling spas, perfect for those with a need for two people but wanting to entertain more. With its spacious interior and multi-level seating, this roomy hot tub is enough to treat you and four friends like royalty, while its European styling makes it a beautiful addition to anyone's castle.

Our exclusively designed zoned jetting delivers a balanced, soothing massage and a rejuvenating hot tub experience.

HYDROGUIDE

SELF-CLEANING MODEL 570

This hot tub meets or exceeds the energy efficiency standards defined by the state of California.

N. American Wattage / 100 Gallons: 15 W

AMBIENT OUTDOOR
TEMPERATURE:

LOW: 45° F / 7° C

HIGH: 75° F / 24° C

MONTHLY
COST:

\$14.72

\$6.65

European Wattage / 100 Gallons: 39.56 W



SIGNATURE SELF-CLEANING HOT TUB **MODEL 670**

Specifications: Series	Gold	Platinum
Freeze Protection	Yes	Yes
Self Clean Mode	Yes	Yes
HydroClean Floor Vacuum	Yes	Yes
HydroClean Pressurized Filter	Yes	Yes
Programmable Filtration Cycles	Yes	Yes
Deluxe LED & Garden FX Lighting	Opt	Opt
Total Therapy Jets	35	50
HydroSequence Massage	N/A	Opt
HydroVortex Jet	Yes	Yes
HydroClean Filtration Pump	Yes	Yes
North American 60Hz	4hp	3hp & 4hp
International 50Hz	4hp	3hp & 4hp
Stainless Steel HydroWise Heater NA	4Kw	4Kw
Stainless Steel HydroWise Heater EU	3Kw	3Kw
Mazzei Injected Ozonator	Opt	Opt
HydroFlex Foot Massage	Yes	Yes

39" DEEP MODEL SPECS.

SEATING: 5-6 Person

OUTER DIMENSIONS:

84" X 84" X 39"*

(213.36 cm x 213.36 cm

x 99.06 cm)*

VOLUME:

305 US gal / 1,161 L

WEIGHT FULL:

3,353 lbs / 1,521 kg

* +/- tolerance of 1/4"

Model 670 Platinum in Silver Marble shown here.

Both design and performance, the 670 Hot Tub features Thermal Shield Insulation Technology, Self Cleaning filtration for cleaner safer water, Zone Therapy with Wellness Programs, and much more. Our 6-person contemporary design and innovations like the HydroTher Program are perfect for those who want the very best in Hydrotherapy technology.

HYDROGUIDE

SELF-CLEANING MODEL 670

This hot tub meets or exceeds the energy efficiency standards defined by the state of California.

N. American Wattage / 100 Gallons: 18 W

AMBIENT OUTDOOR
TEMPERATURE:

LOW: 45° F / 7° C

HIGH: 75° F / 24° C

MONTHLY
COST:

\$15.53

\$7.01

European Wattage / 100 Gallons: 40.86 W





SIGNATURE SELF-CLEANING HOT TUB **MODEL 695**

Specifications:		
Series	Gold	Platinum
Freeze Protection	Yes	Yes
Self Clean Mode	Yes	Yes
HydroClean Floor Vacuum	Yes	Yes
HydroClean Pressurized Filter	Yes	Yes
Programmable Filtration Cycles	Yes	Yes
Deluxe LED & Garden FX Lighting	Opt	Opt
Total Therapy Jets	35	50
HydroSequence Massage	N/A	Opt
HydroVortex Jet	Yes	Yes
HydroClean Filtration Pump	Yes	Yes
North American 60Hz	4hp	3hp & 4hp
International 50Hz	4hp	3hp & 4hp
Stainless Steel HydroWise Heater NA	4Kw	4Kw
Stainless Steel HydroWise Heater EU	3Kw	3Kw
Mazzei Injected Ozonator	Opt	Opt
HydroFlex Foot Massage	Yes	Yes

**39" DEEP
MODEL SPECS.**

Seating: 5-6 Persons

Outer Dimensions:
84" X 84" X 39"*
(213.36 cm x 213.36 cm
x 99.06 cm)*

Volume:
359 US gal / 1,365 L

Weight Full:
3,820 lbs / 1,733 kg

* +/- tolerance of 1/4"

Model 695 Platinum in
Silver Marble shown here.

HYDROGUIDE

SELF-CLEANING MODEL 695
This hot tub meets or exceeds the energy efficiency standards defined by the state of California.

AMBIENT OUTDOOR TEMPERATURE:	MONTHLY COST:
LOW: 45° F / 7° C	\$15.53
HIGH: 75° F / 24° C	\$7.01

N. American Wattage / 100 Gallons: 18 W
 European Wattage / 100 Gallons: 40.86 W

The ultimate in advanced relaxation, the 695 Self-Cleaning Hot Tub has modern styling, multi-color LED lighting and the S-Shaped Immersion Lounger that allows you to sink into the ambience. With expansive Barrier-Free seating for up to 6 people, leaving room for everyone to totally relax. This hot tub is the complete Hydrotherapy experience.



SIGNATURE SELF-CLEANING HOT TUB **MODEL 720**

Specifications:		
Series	Platinum	
Freeze Protection	Yes	
Self Clean Mode	Yes	
HydroClean Floor Vacuum	Yes	
HydroClean Pressurized Filter	Yes	
Programmable Filtration Cycles	Yes	
Deluxe LED & Garden FX Lighting	Opt	
Total Therapy Jets	55	
HydroSequence Massage	Opt	
HydroVortex Jet	Yes	
HydroClean Filtration Pump	Yes	
North American 60Hz	3hp & 4hp	
International 50Hz	3hp & 4hp	
Stainless Steel HydroWise Heater NA	4Kw	
Stainless Steel HydroWise Heater EU	3Kw	
Mazzei Injected Ozonator	Opt	
HydroFlex Foot Massage	Yes	

**39" DEEP
MODEL SPECS.**

Seating: 6-7 Persons

Outer Dimensions:
90" X 90" X 39"*
(228.6 cm x 228.6cm
x 99.06 cm)*

Volume:
399 US gal / 1,515 L

Weight Full:
4,192 lbs / 1,902 kg

* +/- tolerance of 1/4"

Model 720 Platinum in
Silver Marble shown here.

HYDROGUIDE

SELF-CLEANING MODEL 720
This hot tub meets or exceeds the energy efficiency standards defined by the state of California.

AMBIENT OUTDOOR TEMPERATURE:	MONTHLY COST:
LOW: 45° F / 7° C	\$17.63
HIGH: 75° F / 24° C	\$7.96

N. American Wattage / 100 Gallons: 18.5 W
 European Wattage / 100 Gallons: 42.93 W

The expansive 720 Self-Cleaning Hot Tub comfortably seats 6-7 people, with room for everyone to enjoy state-of-the-art jets, two Hydrotherapy jet pumps, and four zones with patented wellness programs and HydroTher Control. It's powerful relaxation at its finest.





SIGNATURE SELF-CLEANING HOT TUB **MODEL 770**

Specifications:

Series	Platinum
Freeze Protection	Yes
Self Clean Mode	Yes
HydroClean Floor Vacuum	Yes
HydroClean Pressurized Filter	Yes
Programmable Filtration Cycle	Yes
Deluxe LED & Garden FX Lighting	Opt
Total Therapy Jets	55
HydroSequence Massage	Opt
HydroVortex Jet	Yes
HydroClean Filtration Pump	Yes
North American 60Hz	3 & 4hp
International 50Hz	3 & 4hp
Stainless Steel HydroWise Heater NA	4Kw
Stainless Steel HydroWise Heater EU	3Kw
Mazzei Injected Ozonator	Opt
HydroFlex Foot Massage	Yes

39" DEEP MODEL SPECS.

Seating: 6-7 Persons

Outer Dimensions:
90" X 90" X 39"*
(228.6 cm X 228.6 cm
X 99.06 cm)*

Volume:
423 US gal / 1,608 L

Weight Full:
4,428 lbs / 2,009 kg

* +/- tolerance of 1/4"

Model 770 Platinum in
Silver Marble shown here.

HYDROGUIDE

SELF-CLEANING MODEL 770

This hot tub meets or exceeds the energy efficiency standards defined by the state of California.

N. American Wattage / 100 Gallons: 18.5 W

AMBIENT OUTDOOR TEMPERATURE:

LOW: 45° F / 7° C

HIGH: 75° F / 24° C

MONTHLY COST:

\$17.63

\$7.96

European Wattage / 100 Gallons: 42.93 W

The 770 Self-Cleaning Hot Tub has the best of everything, with room for up to seven adults, a variety of seat heights formed to fit diverse body types comfortably. With HydroTher Program and Wellness Zone jet configurations this is the most popular one lounger hot tub in the Hydropool line-up.

Experience the four Zones, from soft rolling massages to a deep tissue release. Just press a button and let the hot tub massage take over to give you the only automated hydrotherapy experience in the industry.



SIGNATURE SELF-CLEANING HOT TUB **MODEL 790**

Specifications:

Series	Platinum
Freeze Protection	Yes
Self Clean Mode	Yes
HydroClean Floor Vacuum	Yes
HydroClean Pressurized Filter	Yes
Programmable Filtration Cycles	Yes
Deluxe LED & Garden FX Lighting	Opt
Total Therapy Jets	60
HydroSequence Massage	Opt
HydroVortex Jet	Yes
HydroClean Filtration Pump	Yes
North American 60Hz	3hp & 4hp
International 50Hz	3hp & 4hp
Stainless Steel HydroWise Heater NA	4Kw
Stainless Steel HydroWise Heater EU	3Kw
Mazzei Injected Ozonator	Opt
HydroFlex Foot Massage	Yes

39" DEEP MODEL SPECS.

Seating: 6-8 Persons

Outer Dimensions:
94" X 94" X 39"*
(238.76 cm x 238.76 cm
x 99.06 cm)*

Volume:
391 US gal / 1,485 L

Weight Full:
4,241 lbs / 1,924 kg

* +/- tolerance of 1/4"

Model 790 Platinum in
Silver Marble shown here.

HYDROGUIDE

SELF-CLEANING MODEL 790

This hot tub meets or exceeds the energy efficiency standards defined by the state of California.

N. American Wattage / 100 Gallons: 19.5 W

AMBIENT OUTDOOR TEMPERATURE:

LOW: 45° F / 7° C

HIGH: 75° F / 24° C

MONTHLY COST:

\$19.52

\$8.82

European Wattage / 100 Gallons: 44.59 W

The 790 Self-Cleaning Hot Tub is the only double lounger in our Self-Cleaning line-up. With room for up to eight adults it offers the perfect blend of sore muscle relief and plenty of space to socialize. This hot tub has the best of everything, from two Hydrotherapy Jet Pumps, the honeymoon style loungers and diverse seat options sculpted to harmonize with your body.





SIGNATURE SELF-CLEANING HOT TUB **MODEL 970**

Specifications:	
Series	Titanium
Freeze Protection	Yes
Self Clean Mode	Yes
HydroClean Floor Vacuum	Yes
HydroClean Pressurized Filter	Yes
Programmable Filtration Cycles	Yes
Deluxe LED & Garden FX Lighting	Opt
Total Therapy Jets	70
HydroSequence Massage	Opt
HydroVortex Jet	Yes
HydroClean Filtration Pump	Yes
North American 60Hz	3 x 3hp
International 50Hz	3 x 3hp
Stainless Steel HydroWise Heater NA	5.5Kw
Stainless Steel HydroWise Heater EU	4Kw
Mazzei Injected Ozonator	Opt
HydroFlex Foot Massage	Yes

39" DEEP MODEL SPECS.

Seating: 7-8 Persons

Outer Dimensions:

110" x 94" x 39"*
(279.40 cm x 238.76 cm x 99.06 cm)*

Volume:

527 US gal / 2,003 L

Weight Full:

5,843 lbs / 2,651 kg

* +/- tolerance of 1/4"

Model 970 Platinum in Silver Marble shown here.

The 970 Self-Cleaning Hot Tub has room for up to nine adults, the highest seating capacity from Hydromax Hot Tubs. This Hot Tub truly has the best of everything, from the most E-Class hydrotherapy jet variety available to the three HydroMassage Hydrotherapy pumps. This is also the only Hydromax Hot Tub available in the Titanium Series and with bench and S-Shaped Loungers for a side-by-side massage session. Diverse seat options are designed to harmonize with your body, right down to the jetted footwell for your overtaxed feet. Complete with automated wellness programs to deliver the deepest immersion massage experience in the hot tub market.

HYDROGUIDE
SELF-CLEANING MODEL 970
This hot tub meets or exceeds the energy efficiency standards defined by the state of California.

AMBIENT OUTDOOR TEMPERATURE:

LOW: 45° F / 7° C

HIGH: 75° F / 24° C

MONTHLY COST:

\$23.75

\$10.73

N. American Wattage / 100 Gallons: 19.85 W

European Wattage / 100 Gallons: 44.52 W







Options & Upgrades

1. SHELL OPTIONS Standard Acrylic Colors*

Your Hydropool Self-Cleaning Hot Tub is available in these six colors.

2. CABINET OPTION Everlast Cabinetry with Removable Panels

Your Self-Cleaning Hot Tub comes in our maintenance-free Everlast cabinet finish. This premium quality cabinetry is installed onto a sturdy cradle substructure for the ultimate in durability and is embossed for the most realistic look possible. In the unlikely event that you require access to the plumbing or equipment, all four panels are removable for easy service access.

HYDROTHERAPY OPTIONS

3. HydroSequence Massage

The HydroSequence Massage is a seat with 8 jets that pulsate in a random pattern allowing the user to experience a hydrotherapy massage like no other.

OTHER POPULAR OPTIONS

4. iCommand System WORLD EDITION

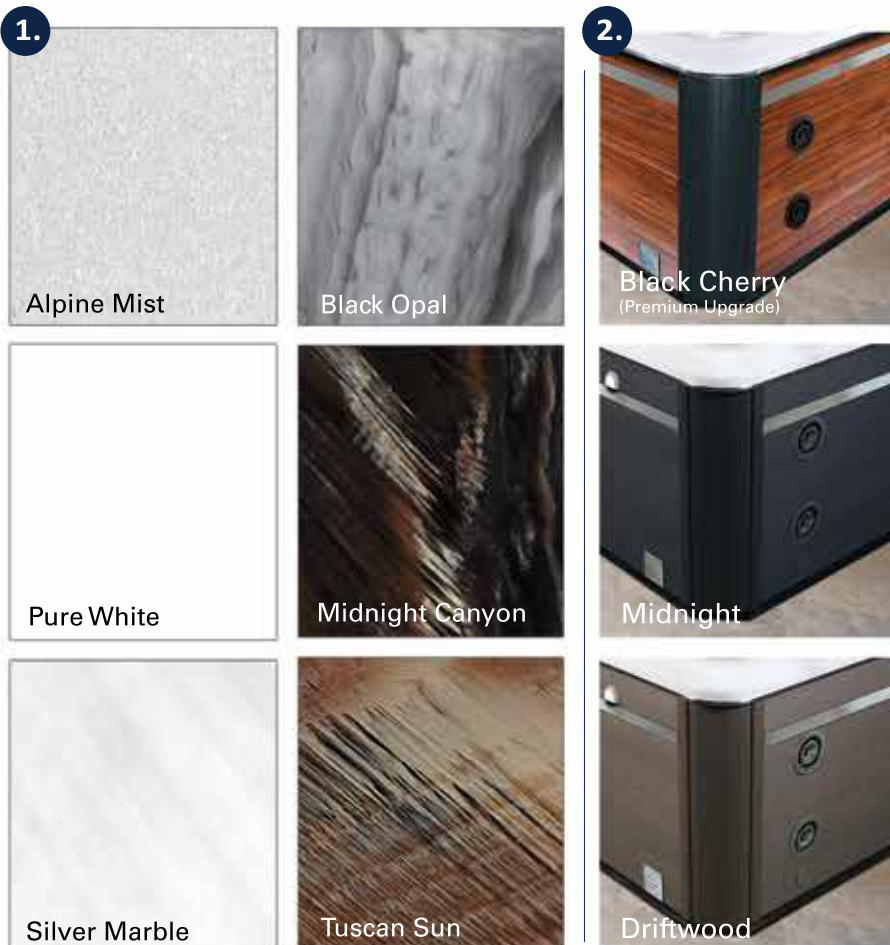
The Smart Phone App that is designed as a wireless hot tub control which allows you to pick the water care settings that fits your schedule, adjust filtration and temperature settings and create the ideal hot tub experience from anywhere in the world.

5. EZ Ultra PureOzone System

The system is designed so that when ozone, a highly effective oxidizer, is mixed with water, it assists in removing of unwanted contaminants.

6. Industry Leading Guarantee

Hydropool Hot Tubs are built to stand the test of time and offer an Industry Leading Guarantee package. For details inquire with your local Hydropool Retailer.



LIGHTING OPTION

7. Deluxe LED & Garden FX

Enjoy the added convenience and reliability of Premium LED Lighting featuring bright LED lights that sequence through blue, green & red colorations or can stay on your favorite of the three. Including two exterior cabinet sconces to illuminate the step area and 4 additional accent lights that beautify the perimeter.

8. Southern Lights (Cabinet Corner Lighting Feature)

Take your hot tub experience to the next level with this lighting option. The addition of Southern Lights LED Corner Lighting to your hot tub illuminates the surroundings and detail of the spa's exterior. The LED lights can be locked on one of three available colors; blue, green or red.

COVER OPTIONS

9. HydroWise XL Thermal Shield Cover

This patented ultra energy efficient 5" cover features a silver reflective lining, a bumper seal through the centre fold and around the outside perimeter to ensure that the heat stays in and the cold stays out. ***There is simply not a better cover.***

COVERLIFTER OPTIONS

All of our cover lifters are made in North America. Constructed of corrosion resistant aluminum brackets and have galvanized arms with comfort foam grips. All our coverlifters are covered by a Limited Lifetime Manufacturer's Warranty.

10. Standard Cover Remover

Designed to work as a high or mid-mount, and can be mounted to the side of the hot tub or can be deck mounted if the hot tub is set into the deck surround. For ease of installation this cover lifter is designed with patented sliding brackets.

11. UnderMount Cover Remover

Designed to work as a deck or surface mount, and can be installed using the weight of the hot tub to hold it in place. No screws, no drilling into your hot tub cabinet is required. This coverlifter also is designed with patented sliding brackets.

12. Hydraulic Cover Remover Plus

Lifts your hot tub cover with greater ease thanks to 80lb dual gas shocks and is designed to mount into your hot tubs cabinet. This coverlifter can also be used on hot tubs that are in-ground installations.

13. STEP OPTION

Two Tier Universal Step

This option, a two tier step makes entering and exiting your hot tub safe and easy. These steps are available in matching Midnight, Driftwood or Espresso color finishes.

14. POWER OPTION

40, 50 Or 60 amp GFCI With Sub-Panel Box*

An optional GFCI and Sub panel can be purchased for your hot tub.

* Not available in Europe.

7.



8.



9.



10.



11.



12.



13.





Available Option Packages

1 TRANQUILITY PACKAGE

Two Premium HydroFall Pillows

The adjustable “Waterfall Jet” helps release the body’s natural endorphins that act as a natural pain suppressor by helping to relieve stress, headaches and pain.

Deluxe LED Lighting

Enjoy the added convenience and reliability of Hydropool’s Premium LED Lighting featuring bright LED lights that sequence through blue, green and red.

2 NORTHERN FALLS PACKAGE

Northern Lights

Strategically placed LED lights provide lighting that illuminates all of the top mounted control valves; brilliantly colored and sequence through a range of colors when turned on and can be locked on to one color.

Cascading HydroFalls

The HydroFalls package includes three Laminar fountain jets that are illuminated with brilliant color sequencing LED lights.

3 CHROMATHERAPY PACKAGE

Northern Lights

Strategically placed LED lights provide lighting that illuminates all of the top mounted control valves; brilliantly colored and sequence through a range of colors when turned on and can be locked on to one color.

Deluxe LED & Garden FX

Premium Lighting featuring bright LED lights that sequences through different colors and can be locked on to one color. The Garden FX lighting with two cabinet sconces to illuminate the step area and 4 additional accent lights.

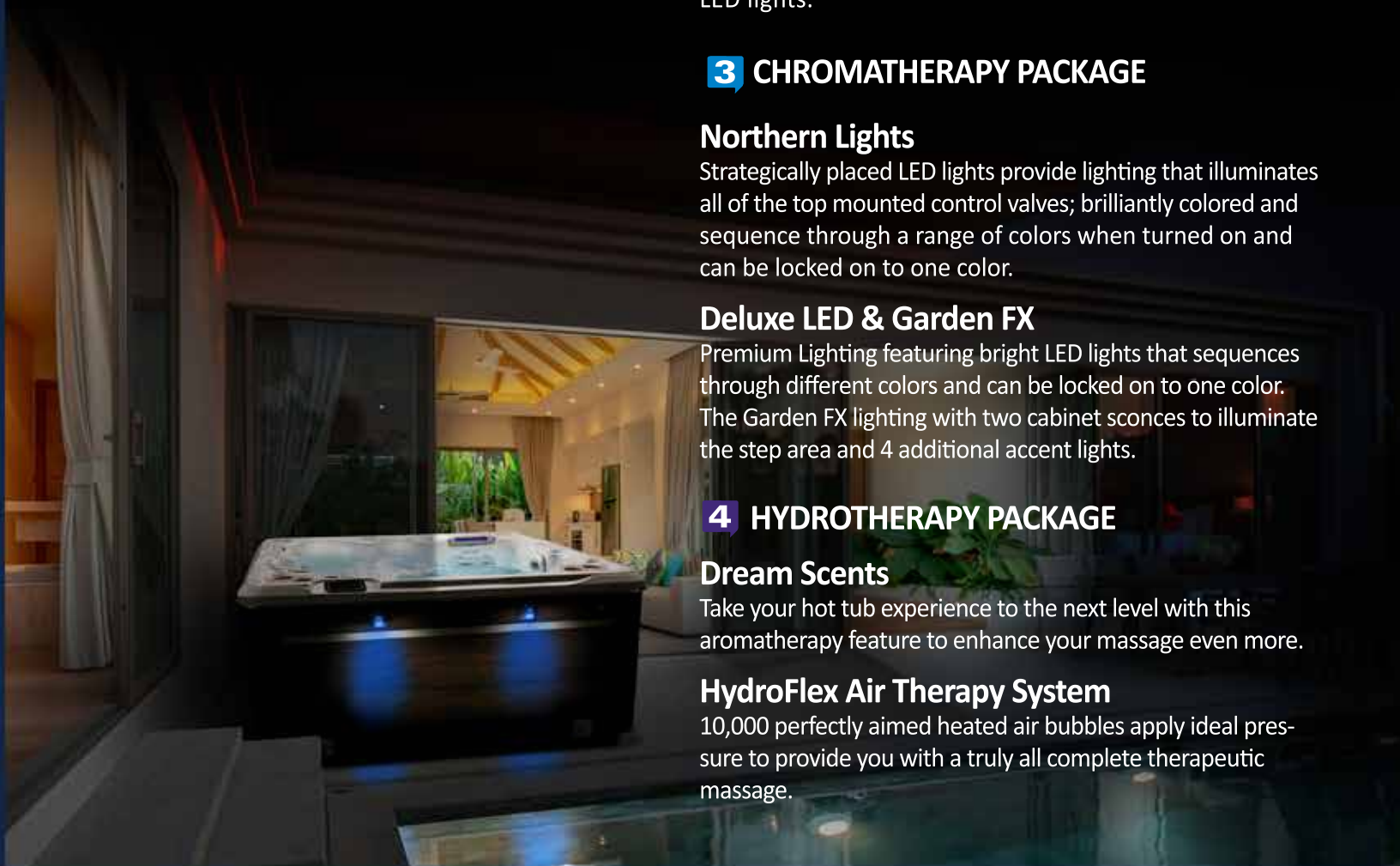
4 HYDROTHERAPY PACKAGE

Dream Scents

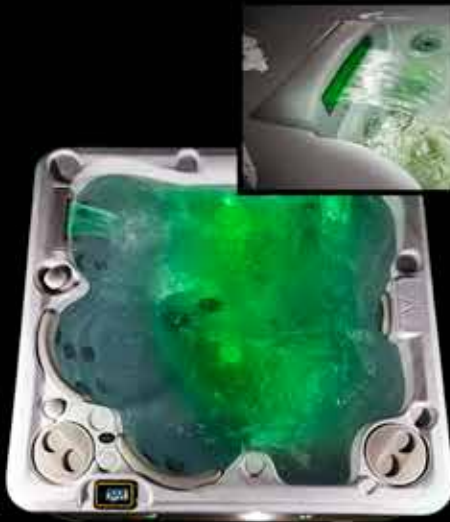
Take your hot tub experience to the next level with this aromatherapy feature to enhance your massage even more.

HydroFlex Air Therapy System

10,000 perfectly aimed heated air bubbles apply ideal pressure to provide you with a truly all complete therapeutic massage.



1



2



3





ITS TIME
YOU FOUND
SERENITY





Serenity Hot Tubs built to last from the ground up.

Hydropool introduces an all new redesigned cabinet and frame. The new Unibody Frame cradles the all new Edgewater Shell and it all sits on a Poly Insulated floor sealing in the acrylic shell, cabinet and frame.

Thus creating a completely sealed system that keeps the heat in and the cold out in the winter. In the summer, heat can be released and regulated by the EcoHeat Exchange fully adjustable venting.

1. POLYMER INSULATED FLOOR:

Designed to keep the warmth in and everything else out. The insulated floor locks in the ambient heat from the pumps.

2. UNIBODY FRAME:

The strongest frame available.

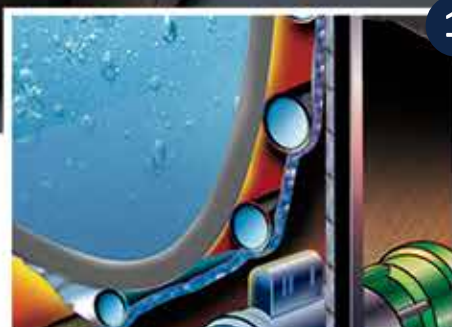
Specifically engineered to hold the weight of the water while adjusting to the heating and cooling that comes with summers and winters.

3. EDGEWATER SHELL:

Built like the hull of a boat that is completely waterproof

The polyester and vinylester resin are combined with fiber-glass to add strength creating the strongest shell in the industry.





The WeatherSeal Insulation System.

Our innovative HydroWise Thermal Shield Energy Efficient Insulation and superior WeatherSeal Cabinetry work in combination with our HydroWise Hard Cover to keep the heat in and the cold out. Combine this with the fact that our hot tubs are engineered to be the most energy efficient in the world, providing 100°F / 37°C

... for just pennies a day.

1. POLY FILM BARRIER:

Supports plumbing and weight of water, minimizes vibration.

2. HYDROWISE THERMAL BLANKETS:

Wrap the plumbing and floor, reflecting radiant heat back into the hot tub, creating the first thermal barrier.

3. 2LB CLOSED CELL FOAM:

Seals the lip of the tub to prevent heat loss; insulates floor of hot tub.

4. WEATHERSEAL CABINET:

Locks in the waste heat given off by pumps and heater by reflecting radiant heat inside cabinetry of the hot tub. The Cabinet Panels can be easily removed for access on all sides of the hot tub.

5. HYBRID HEAT ADVANTAGE

The combination of insulation materials allows our WeatherSeal Insulation System to capture the radiant heat from the plumbing and equipment, significantly reducing energy consumption.



1.

The Serenity Hot Tub ClearSpring Filtration System

This system for Serenity Hot Tubs is a three stage filtration system that keeps water cleaner and clearer. The first stage is the Ultra Flow Grill with its Catch Barrier preventing debris from re-entering the hot tub. The second stage skimmer net traps large debris before reaching the filter cartridge. The new Wave filter cartridge with its much larger surface area filters more water than ever before and is made out of microfiber with a dense inner core that traps the smallest particles and holds them. Clean and healthy spa water is the foundation of all Serenity Hot Tubs so that you can enjoy the cleanest water with the easiest system to operate and maintain your Serenity Hot Tubs performance.

1. ULTRA FLOW GRILL:

Allows maximum flow of water, quickly removing debris from the hot tub water. The Catch Barrier prevents debris from re-entering the hot tub.

2. ULTRA FLOW SKIMMER NET

The skimmer net eliminates the need to skim the surface and is the first line of defence. Catches any and all debris too large for filter to catch.

3. WAVE FILTER:

This unique wave design maximizes the surface area and captures debris more efficiently. It can be easily accessed, yet hidden from eyesight.

4. EVERGREEN PUMP

Filters 87 US Gallons of spa water per minute and has an energy efficient design.

2.



3.

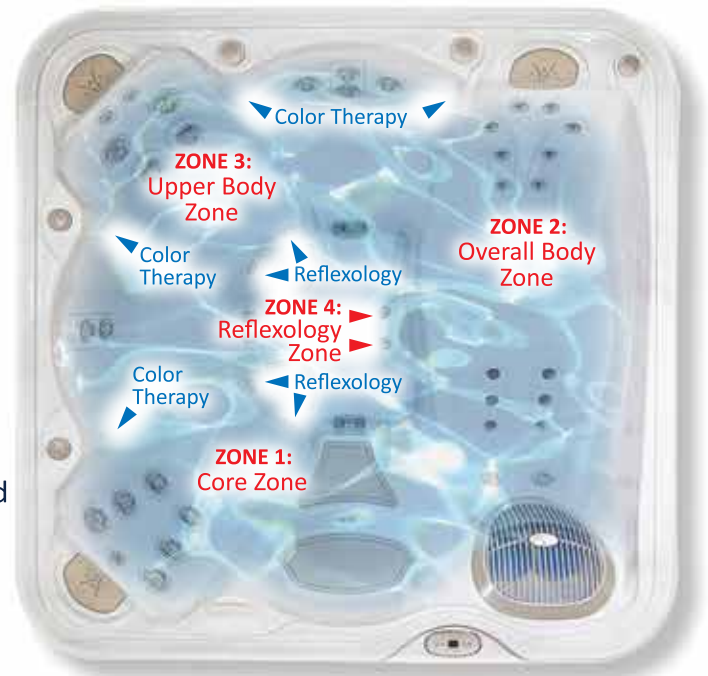


4.



Science Of Immersion In A Serenity Hot Tub.

Through our understanding of Zone Hydrotherapy and ergonomics of the human body, Hydropool has taken the science of immersion to the next level. This constant innovation has created a line of hot tubs that allows them to interact with the human body in the most natural and effective way possible with the introduction of Zone Therapy. Hydropool Zone Therapy is designed around you and your usage of the hot tub to help you benefit from a general sense of well-being. We are all unique individuals genetically and with varying lifestyles that all play a role in defining our sensitivity to a release of various tensions.



ZONE THERAPY:

Each zone is designed to massage a specific part of your body:

ZONE 1: CORE ZONE

Activation of the Paravertebral Muscles

Vertebral fatigue contributes to headaches. This zone releases tension in the Dorsal Muscles.

ZONE 2: OVERALL ZONE

Activation of leg & Lumbar Muscles

Promotes improved circulation in the lower part of the body and allows for venous return and lighten legs.

ZONE 3: UPPER BACK ZONE

Activation of upper back, neck and shoulder muscles

Eliminates tension in Trapezioid Muscles and neck by releasing tensions in Solar Plexus area.

ZONE 4: REFLEXOLOGY

Activation of foot arch muscles

Deeply massages the small venous areas in your foot arch offering relief as your feet take the brunt of most sports.



Each zone has four features, designed to maximize your hydrotherapy:

1. TYPE OF JETS

The type of jet is crucial to a proper massage. Our E-55 jet is designed purposely for a deep tissue massage and our E-40 Jet is designed for a gentle massage.

2. JET PLACEMENT

Our hydrotherapy jets are specifically designed for each zone so that the superior benefits of hydrotherapy are achieved. Our different jet patterns are designed to work different muscle groups.

3. SEATING DESIGNED AROUND YOU

Designed to work with your body's natural structure and functions to provide maximum comfort and functionality. Our ergonomic seats support the skeletal structure so that the muscular system does not have to; it removes stress from muscles and joints so that the body relaxes.

4. DURATION IN SEAT

The last component of Zone Therapy is the duration of time that a person spends in each seat (Zone) of the hot tub. The duration in seat combined with the sequence of seats is critical to the performance of the Zone Therapy.



Serenity Hot Tub Collection

If you want elegant styling and exceptional performance, check out the Serenity Collection. You'll learn what makes these spas special, including unique massage, spacious interiors and a range of models that fit from four to seven adults. Plus, you can count on legendary Hydromaster quality, Weather Seal Insulation, and innovative water care options, like the PureWater System that helps you spend less time caring for your spa, and more time enjoying it.



At a glance...

Model 4300



36" DEEP MODEL:
SEATING: 3 Person
TOTAL ALL ACTIVE
THERAPY JETS: 31

Model 4500



36" DEEP MODEL:
SEATING: 4 Person
TOTAL ALL ACTIVE
THERAPY JETS: 33

Model 5900



36" DEEP MODEL:
SEATING: 5 Person
TOTAL ALL ACTIVE
THERAPY JETS: 41

Model 6600



36" DEEP MODEL:
SEATING: 6 Person
TOTAL ALL ACTIVE
THERAPY JETS: 31

Model 6800



36" DEEP MODEL:
SEATING: 6 Person
TOTAL ALL ACTIVE
THERAPY JETS: 41





SERENITY HOT TUB MODEL 4300

Specifications: Series Model 4300

Jets And Plumbing	
Total All Active Therapy Jets	31

Electronics	
Dual Speed Filtration Therapy Pump	
North American 60Hz	4hp
International 50hz	4hp
Stainless Steel HydroWise Heater NA	4Kw
Stainless Steel HydroWise Heater EU	3Kw
Electronic Controls	Yes
Freeze Protection	Yes
Pump Purge	Yes
Standby Mode	Yes
Programmable Filtration Cycles	Yes
Electronic Temperature Control	Yes
Moon Lights	Yes

36" DEEP MODEL SPECS.

Seating: 3 Person
Outer Dimensions: 85" x 62" x 36"*
 (215.9 cm x 157.5 cm x 91.44 cm)*
Volume: 234 US gal / 925 L
Weight Full: 2,564 lbs / 1,163 kg

* +/- tolerance of 1/4"

Silver Marble shown here.

The next level of affordable luxury moves you into the popular rectangle shaped tub. Perfect for 4 people, this model has contoured seating for 3 and one Never-Float Lounger. It is ideal for your closest friends and family to lounge and enjoy a new kind of happy hour. The Serenity 4300 features our exclusive Weather Seal Insulation and state of the art Massage wellness programs



SERENITY HOT TUB MODEL 4500

Specifications: Series Model 4500

Jets And Plumbing	
Total All Active Therapy Jets	33

Electronics	
Dual Speed Filtration Therapy Pump	
North American 60Hz	4hp
International 50hz	4hp
Stainless Steel HydroWise Heater NA	4Kw
Stainless Steel HydroWise Heater EU	3Kw
Electronic Controls	Yes
Freeze Protection	Yes
Pump Purge	Yes
Standby Mode	Yes
Programmable Filtration Cycles	Yes
Electronic Temperature Control	Yes
Moon Lights	Yes

36" DEEP MODEL SPECS.

Seating: 4 Person
Outer Dimensions: 80" X 80" X 36"*
 (203.2 cm x 203.2 cm x 91.44 cm)*
Volume: 309 US gal / 1,176 L
Weight Full: 3,176 lbs / 1,441 kg

* +/- tolerance of 1/4"

Silver Marble shown here.

Step into the seats that give you the luxury experience you deserve. Our High Flo Low Pressure jets will give you a full body massage and guarantee the best hydrotherapy session in your own private backyard. Comfortably rejuvenate in a hot tub where each seat can target different pressure points as the jet placement varies. This spa melts away your stress as you rest your head against the soft pillows.





SERENITY HOT TUB MODEL 5900

Specifications:

Series	Model 5900
--------	------------

Jets And Plumbing	
Total All Active Therapy Jets	41
Electronics	
Dual Speed Filtration Therapy Pump	
North American 60Hz	1 x 3hp & 1 x 4hp
International 50hz	1 x 3hp & 1 x 4hp
Stainless Steel HydroWise Heater NA	4Kw
Stainless Steel HydroWise Heater EU	3Kw
Electronic Controls	Yes
Freeze Protection	Yes
Pump Purge	Yes
Standby Mode	Yes
Programmable Filtration Cycles	Yes
Electronic Temperature Control	Yes
Moon Lights	Yes

Seating: 5 Person
Outer Dimensions:
 85" x 85" x 36"*
 (217.17 cm x 217.17 cm x 91.44 cm)*
Volume:
 403 US gal / 1,533 L
Weight Full:
 4,048 lbs / 1,837 kg
 * +/- tolerance of 1/4"
 Silver Marble shown here.

Refresh and rejuvenate in this state- of-the-art hot tub that can fit up to 5 people. Treat yourself to a high-impact full body massage with our exclusive wellness programs that are carefully placed to give you the most out of your hydrotherapy session. Each jet is carefully placed to relieve tired and sore muscles. Our full size lounge and captain seat are shaped to your body, leaving you feel stress free and relaxed.



SERENITY HOT TUB MODEL 6600

Specifications:

Series	Model 6600
--------	------------

Jets And Plumbing	
Total All Active Therapy Jets	31
Electronics	
Dual Speed Filtration Therapy Pump	
North American 60Hz	4hp
International 50hz	4hp
Stainless Steel HydroWise Heater NA	4Kw
Stainless Steel HydroWise Heater EU	3Kw
Electronic Controls	Yes
Freeze Protection	Yes
Pump Purge	Yes
Standby Mode	Yes
Programmable Filtration Cycles	Yes
Electronic Temperature Control	Yes
Moon Lights	Yes

**36" DEEP
MODEL SPECS.**
SeaSeating: 6 Person
Outer Dimensions:
 80" x 80" x 36"*
 (203.2 cm x 203.2 cm x 91.44 cm)*
Volume:
 309 US gal / 1,176 L
Weight Full:
 3,176 lbs / 1,441 kg
 * +/- tolerance of 1/4"
 Silver Marble shown here.

This high-performance model offers a wide variety of high-performance jets, including the wellness programs, to effectively target muscles that need rehabilitation. It features a wide open seating with lots of foot room and the Clear Spring Filtration provides worry-free operation and crystal-clear spa water to enjoy hours of hydrotherapy and relaxation.





SERENITY HOT TUB MODEL 6800

Specifications:

Series	Model 6800
Jets And Plumbing	
Total All Active Therapy Jets	41
Electronics	
Dual Speed Filtration Therapy Pump	
North American 60Hz	1 x 3hp & 1 x 4hp
International 50hz	1 x 3hp & 1 x 4hp
Stainless Steel HydroWise Heater NA	4Kw
Stainless Steel HydroWise Heater EU	3Kw
Electronic Controls	Yes
Freeze Protection	Yes
Pump Purge	Yes
Standby Mode	Yes
Programmable Filtration Cycles	Yes
Electronic Temperature Control	Yes
Moon Lights	Yes

36" DEEP MODEL SPECS.

Seating: 6 Person

Outer Dimensions:

85" x 85" x 36"*
(217.17 cm x 217.17 cm
x 91.44 cm)*

Volume:

376 US gal / 1,430 L

Weight Full:

3,807 lbs / 1,727 kg

* +/- tolerance of 1/4"

Silver Marble shown here.

Comfortably fit up to 6 adults and enjoy features such as our zone therapy wellness programs. With jets positioned throughout the spa to target specific muscle groups and a dedicated captain's chair sculpted to cradle your body, your set for the ultimate in relaxation, comfort and style while soaking sore muscles back to life.





A full-page background image of a sunset over the ocean. The sky is a gradient of light blue and pink, with the sun's glow visible on the right side. The water is dark blue with gentle ripples. In the distance, two small islands are visible on the horizon. A dark blue square is centered in the upper half of the image, containing the text "CLASSIC NEVER GOES OUT OF STYLE" in white, uppercase, sans-serif font. The text is flanked by two thin white horizontal lines.

CLASSIC
NEVER GOES
OUT OF
STYLE



Classic Hot Tub Collection

There is exceptional quality, comfort and value in every Classic Hot Tub. Attractively priced and packed with exciting standard features that are sure to please even the most budget minded consumer. The modern design and enticing ergonomics is sure to bring serenity to you and your guests, while delivering many years of fun and enjoyment for friends and family.





CLASSIC HOT TUB MODEL 4L

Specifications:	Model 4L
Series	
Jets And Plumbing	
Total All Active Therapy Jets	26
Electronics	
Stainless Stl. HydroWise Heater NA	4Kw
Stainless Stl. HydroWise Heater EU	3Kw
Electronic Controls	Yes
Freeze Protection	Yes
Pump Purge	Yes
Standby Mode	Yes
Programmable Filtration Cycles	Yes
Electronic Temperature Control	Yes
Standard LED Lighting	Yes
110V / 220V Convertable By Retailer	Yes

34" DEEP MODEL SPECS.

Seating: 4 Person

Outer Dimensions: 83.25" x 62" x 34"*
(211.46 cm x 157.5 cm x 86.36 cm)*

Volume: 243 US gal / 925 L

Weight Full: 2,564 lbs / 1,163 kg

* +/- tolerance of 1/4"

Silver Marble shown here.

This quaint model modestly fits up to 4 adults and enjoy features such as ergonomically designed seating with strategically placed jetting. These jets are positioned throughout the spa to target specific muscle groups and each seat is designed to cradle your body for the total relaxation, comfort and style while you soak pondering the meaning of life itself.



CLASSIC HOT TUB MODEL 5L

Specifications:	Model 5L
Series	
Jets And Plumbing	
Total All Active Therapy Jets	26
Electronics	
Stainless Stl. HydroWise Heater NA	4Kw
Stainless Stl. HydroWise Heater EU	3Kw
Electronic Controls	Yes
Freeze Protection	Yes
Pump Purge	Yes
Standby Mode	Yes
Programmable Filtration Cycles	Yes
Electronic Temperature Control	Yes
Standard LED Lighting	Yes
110V / 220V Convertable By Retailer	Yes

36" DEEP MODEL SPECS.

Seating: 4 Person

Outer Dimensions:
79.5" x 79.5" x 36"*
(201.93 cm x 201.93 cm
x 91.44 cm)*

Volume:
309 US gal / 1,176 L

Weight Full:
3,176 kg / 1,441 kg

* +/- tolerance of 1/4"

Silver Marble shown here.

The spacious 5L is built with quality and comfort in mind so all you have to do is relax and enjoy. This spacious entry-level hot tub will accommodate 4-5 people comfortably. This spa can be enjoyed daily with friends or family and is a real crowd pleaser. Features include large foot well, easy entry non-slip steps and party-like seating.



What comes standard on your Serenity Hot Tub

1. AquaBlade WaterFall Feature*

Consists of two pop-up waterfall jets that create a beautiful cascading blade of water into your Serenity Hot Tub. These also light-up in conjunction with the Moon Lighting feature and sequence through blue, green and red colorations or can stay on your favorite color.

2. Moon Lighting* (Cabinet Corner Lighting Feature)

This LED Corner Lighting System illuminates the surroundings and detail of the spa's exterior. Enjoy the added convenience and reliability of premium lighting featuring bright LED lights that sequence through blue, green and red colorations or can stay on your favorite color. The interior LED Lights illuminate the seating area and sequence or can be locked on to one of three colors.

3. WeatherSeal Cabinet*

This all new cabinet design is the next level in energy efficiency with its easy remove panels for convenient access to the hot tubs interior. Available in two new colors.



* Not available on Classic 4L and 5L Models.

Serenity and Classic Hot Tub Options

4. iCommand System WORLD EDITION

The Smart Phone App that is designed as a wireless hot tub control which allows you to change water care settings, adjust filtration and temperature from wherever you are.

5. EZ Ultra PureOzone System

The system is designed so that when ozone, a highly effective oxidizer, is mixed with water, it assists in removing of unwanted contaminants from your hot tub water.

6. Hydropool PureWater System

If clean and safe water is important to you. The PureWater System is one the most efficient water purification systems available.
(Refer to Page 19 for more details)

7. Two Tier Universal Step

This option, a two tier step makes entering and exiting your hot tub safe and easy. These steps are available in matching Midnight, Driftwood or Espresso color finishes.

8. Standard Acrylic Colors*

Your Hydropool Serenity Hot Tub is available in a wide range of colors. Please note that the Classic Hot Tub Models 4L or 5L only come in Silver Marble Acrylic finish.

9. Standard Cabinet Colors

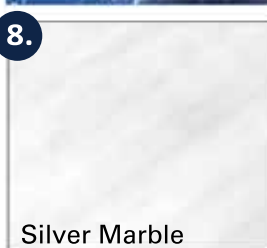
Your Serenity Model 4300, 4500, 5900, 6600 and 6800 hot tubs, all come in your choice of two colors; Designer Harbor Grey and Designer Driftwood.

For the Classic Hot Tub Models 4L and 5L, both come in either an Espresso Dura or Driftwood Dura finish.

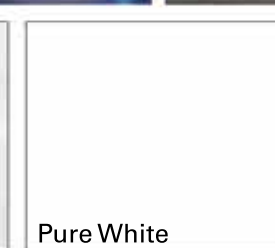
10. 40, 50 Or 60 amp GFCI with Sub-Panel Box*

A GFCI breaker can be conveniently installed into the included custom sub panel. For the 4L and 5L Models a GFCI includes Subpanel with a 15 Amp Plug.

* Not available on Classic 4L and 5L Models.



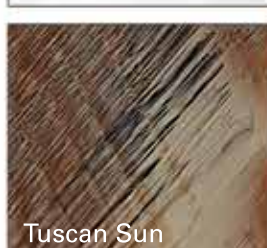
Silver Marble



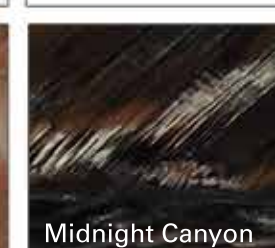
Pure White



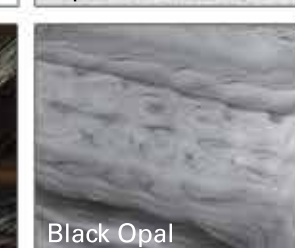
Alpine Mist



Tuscan Sun



Midnight Canyon



Black Opal



Designer Harbor Grey



Designer Driftwood



8/9. Classic Color Combinations



Driftwood



Espresso

Behind every hot tub is over 40 years of passion and experience

Hydropool originated in 1980 and has become one of the largest hot tub and swim spa retailers and manufacturers in the world. Whether it's our products, knowledgeable advice, or after sales service and support, the Hydropool Team gives our customers not just great service but... the best experience in the hot tub industry.

It's a company built on family values. Our Goal is to be the pre-eminent manufacturer of Hot Tubs on the planet. We have the very best people in the industry who have the passion, vision and knowledge to deliver customer satisfaction every day. We've created a network of dedicated retailers in over 60 countries around the world.

We've been able to do that by meeting and exceeding all international standards. Our unique Self-Cleaning and Triple Thermal Shield Systems enable us to meet the rigorous energy efficiency standards set out by the state of California.

We've been recognized worldwide for excellence and innovation. Hydropool Hot Tubs and Swim Spas have achieved unsurpassed recognition worldwide by setting the industry standards for hot tub and swim spa design and innovation. We have been awarded the most certifications and honors in the hot tub industry. We also have an industry leading guarantee, our hot tubs and swim spas are built to stand the test of time. For details on coverage inquire with your local Hydropool Retailer.

We're a company you can trust to deliver satisfaction. We stand behind every Hydropool Hot Tub and Swim Spa manufactured and are dedicated to excellence in customer service. Our customer satisfaction has reached such an incredible level that referrals generate 25% of our business every year.

Hydropool has become the number one choice of professional sports teams worldwide. The Toronto Maple Leafs and New York Rangers of the NHL, as well as, the Toronto Raptors and New York Knicks of the NBA.





Sharing the power of water around the globe

We have been creating and innovating with water for over 40 years and sharing our experience with you through our worldwide network of retailers.

www.hydروpoolhottubs.com

Algeria	Germany	Reunion Islands
Australia	Greece	Romania
Austria	Guadeloupe	Russia
Barbados	Hungary	Saudi Arabia
Belarus	Iceland	Scotland
Belgium	Indonesia	Serbia
Bermuda	Ireland	Singapore
Brazil	Israel	Slovak Republic
Bulgaria	Italy	Spain
Canada	Korea	St. Barthelemy
Cayman Islands	Latvia	St.Martin
China	Lithuania	Sweden
Croatia	Luxembourg	Switzerland
Cyprus	Malta	Thailand
Czech Republic	Mexico	Turkey
Denmark	Monaco	Ukraine
Dubai	Morocco	United States
Dutch Caribbean	Netherlands	Wales
England	New-Caledonia	
Estonia	North Ireland	
Finland	Norway	
France	Poland	
French Polynesia	Portugal	
	Qatar	



HYDROPOOL
hot tubs • swim spas

THE WATER IS CALLING





HYDROPOOL
hot tubs • swim spas

THE WATER IS CALLING.

Hydropool Inc.
Tel: 905.565.6810
Toll Free: 1.800.465.2933
Fax: 905.565.6820
Email: info@hydropoolhottubs.com

Your Authorized Hydropool Retailer is: