



**HYDROPOOL**

hot tubs • swim spas

[hydropoolhottubs.com](http://hydropoolhottubs.com)

**The Water Is Calling**  
**2023 HOT TUB GUIDE**





# *Welcome To Hydropool*

The pace of life has made it incredibly  
difficult to stay connected.

That's why we engineer our hot tubs and swim spas to unlock the  
power of water, so you can make meaningful connections with family,  
your friends, and yourself.











PHOTO COURTESY OF HYDROPOOL LONDON, LONDON, ONTARIO



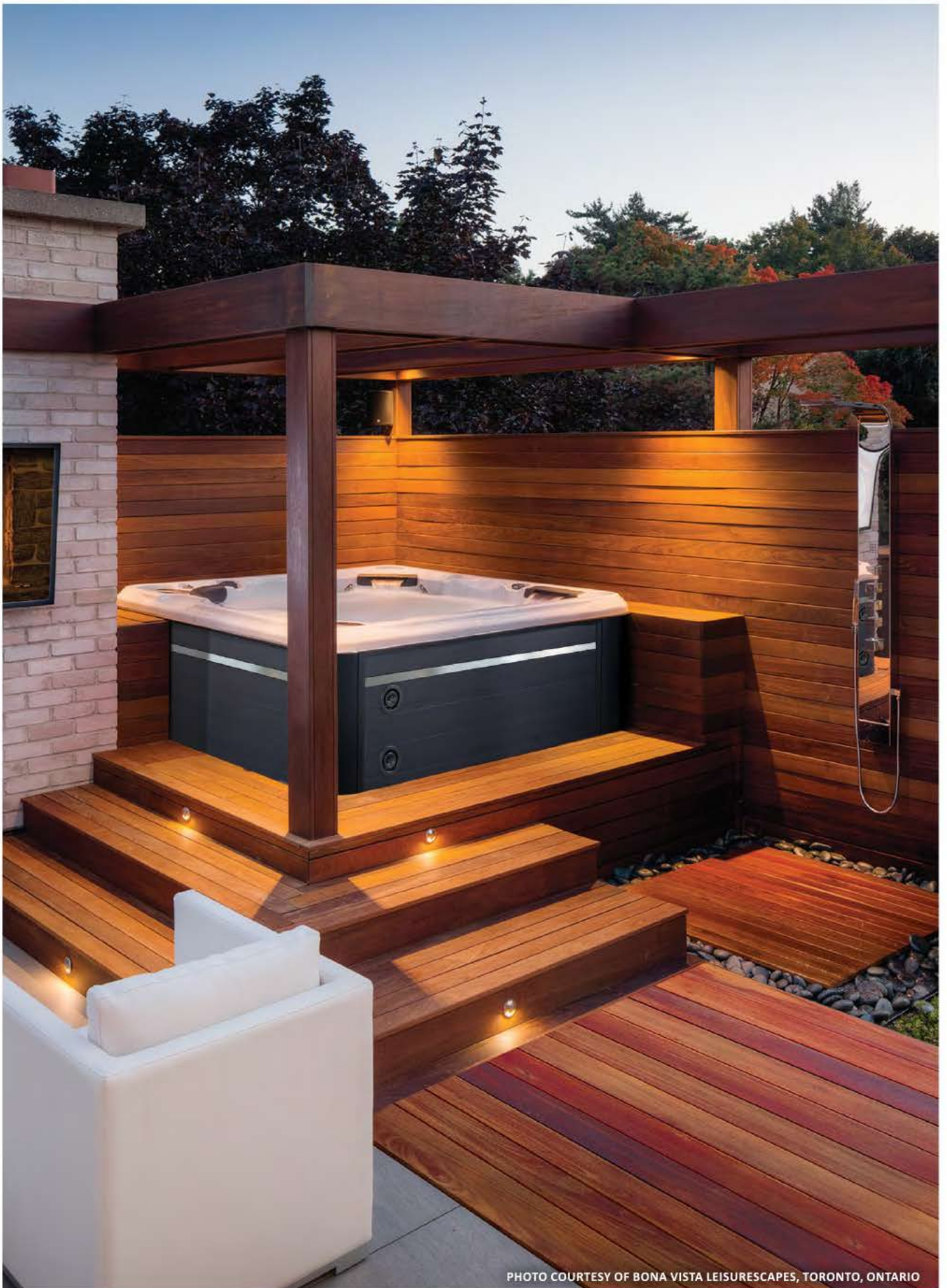


PHOTO COURTESY OF BONA VISTA LEISURESCAPES, TORONTO, ONTARIO



# Why Buy A Hydropool Hot Tub?

## START YOUR DAY OFF RIGHT

Imagine starting each morning by taking a quick soak in your very own Hydropool Hot Tub. Your blood circulation will improve, your muscles will relax and you'll instantly feel better.

Your state of mind will be enhanced and you will be better prepared for your day at work, to drop off the kids at school or even head straight to the gym.

## RELIEVE STRESS AND RELAX

When you're relaxing, life is more enjoyable. It is easier to converse, share intimacies, smile and laugh. You'll look forward to your time in your hot tub. Hydropool Hot Tubs are great for entertaining. Your guests will always leave with fond memories of the time spent with you in your hot tub.

## SOOTHE THOSE TIRED AND ACHING MUSCLES

The heat of your Hydropool Hot Tub results in collagen tissue becoming more flexible. This new flexibility benefits many people with arthritic symptoms. Doctors have advised those with arthritis that soaking in warm water several times a day relaxes muscles and joints, and helps induce restful sleep. The resulting stress and muscle tension relief has also led many migraine sufferers to claim that hot tub use reduces the frequency and severity of their headaches.

## SLEEP BETTER

The heat of the hot tubs improves blood circulation, provides tension relief and quicker lactic acid removal, creating a comforting state of relaxation and tranquility, which delivers you better sleep at night.

"We call our hot tub 'Hydropool Heaven.' After a long day at the office, it's great coming home to our little piece of heaven."

BRIAN & WENDY CHIN QUAN,  
PROUD HYDROPOOL HOT TUB OWNER'S





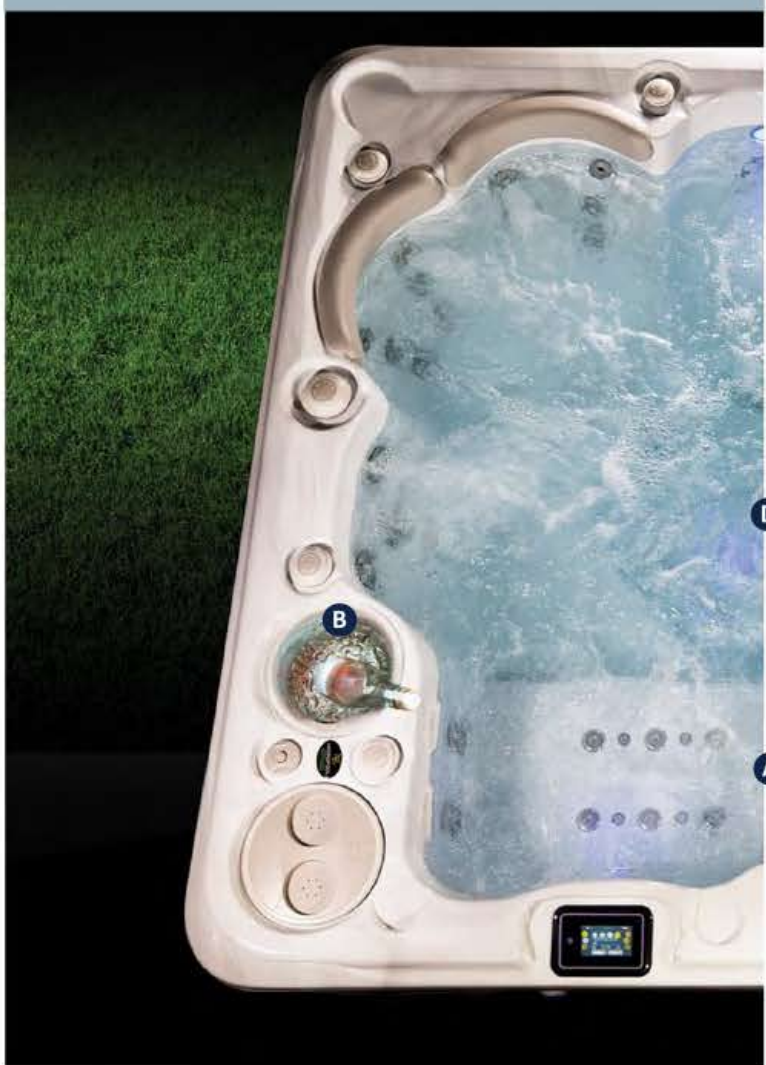
## For The Creatures Of Comfort

Once you've submersed yourself in the healing water of a Hydropool Hot Tub, you'll quickly realize that everything has been designed with your comfort in mind. The superior ergonomic design was created to hug your body and provide you with full comfort and support. From our unique, multi-level seating design, right down to the extra-large footwells, you'll see how easy it is to stretch out, relax and enjoy your hot tub. Deep bucket seats, higher cool down seats, comfortable bench seats and body form loungers give everyone a seat that makes them most comfortable. Plush pillows gently support your head and neck while our wide lumbar support seats cradle your body.

We top it all off with a conveniently-placed ice bucket for just the right occasion.

### Built for you...

- A** Never-Float Lounger **B** Convenient built-in ice bucket with lid



### Ergonomically designed...

- C** Recessed jetting **D** Spacious footwells







PHOTO COURTESY OF CLAIR AZUR, CANNES, FRANCE





PHOTO COURTESY OF BACKYARD RETREAT, OAKVILLE, ONTARIO





## State Of The Art Design

Hydropool is one of the largest hot tub manufacturers in the world. We are committed to raising the standards of our industry by building superior hot tubs. We utilize the latest technologies with the most current environmental practices. Our research and development team is always striving to be the leading edge of innovation and design.



Our state-of-the-art equipment includes the patented Self-Cleaning<sup>TM</sup> System, HydroWise System, our IA Pump Base<sup>®</sup> and Dreamscent<sup>®</sup> technology.



All equipment is built into our self-supporting cradle and truss design that comes with a 10-year worry-free structural guarantee.



Every Hydropool Hot Tub comes with optimized hydraulics and safety steps inside the hot tub.





A blue-toned photograph of a rocky coastline. In the foreground, there is a body of water with gentle ripples. To the left, a large, dark rock formation slopes down towards the water. The background shows more rocks and a dark, possibly forested area. A dark blue rectangular box is centered over the water, containing the title text.

# THE SCIENCE OF IMMERSION







# Let's Talk About The Science Of Immersion

Much like an iceberg, there's a lot going on below the surface of a Hydropool Hot Tub. With a wide variety of scientific contributions to develop our programs, our Zone Therapy has been designed to provide you with a personalized usage map of your hot tub to help you benefit from a general sense of well-being.

Everyone is different and responds in different ways to hydrotherapy. We've created an easy-to-understand summary of the four key elements that make up each zone so you can get the most out of your time in your hot tub.

## KEY ELEMENTS

There are four elements that make up each zone.



### 1. Type of jets

The type of jet is crucial to a proper massage. Our P-Class Jets are designed purposely for a deep tissue massage while our L-Class Jets are designed for a gentle massage.



### 2. Seating designed around you

Our specially designed seating has been built to work with your body's natural structure, and provides maximum comfort and functionality. Our ergonomic support cradles your bone structure so that the muscular system doesn't have to. This allows us to remove stress from your muscles and joints and lets your body relax.



### 3. Jet placement

Our hydrotherapy jets are specifically designed for each zone in order to achieve the superior benefits of hydrotherapy. Different jet patterns are designed to work different muscle groups.



### 4. Duration in seat

The last component of Zone Therapy is up to you. The duration of time that you spend in each seat of the hot tub can optimize your treatment. The time in seat combined with the sequence of seats is critical to the performance of the Zone Therapy.



## HOW DOES ZONE THERAPY WORK?

Through our solid understanding of Zone Therapy and ergonomics of the human body, Hydropool has taken the science of immersion to the next level. This constantly evolving innovation has created a line of hot tubs that allows Zone Therapy to interact with the human body in the most natural and effective way possible.

### ZONE 1 CORE ZONE

#### Activation of paravertebral muscles

Vertebral (meaning your spine) fatigue can contribute to headaches. Zone Therapy is designed to release tension in your dorsal muscles which can help to relax the areas around your vertebrae.

### ZONE 2 OVERALL BODY ZONE

#### Activation of leg and lumbar muscles

This zone helps to promote improved circulation in lower parts of the body which allows for increased blood flow and lightens legs.

### ZONE 3 UPPER BODY ZONE

#### Activation of upper back, neck & shoulder muscles

This zone eliminates tension in trapezoid muscles and neck, specifically releasing tensions in Solar Plexus area.

### ZONE 4 REFLEXOLOGY ZONE

#### Activation of foot arch muscles

With our feet playing such a critical role in our overall physical health and taking the brunt of most sports play, this zone is designed to deeply massage the small venous areas in your foot arch.



## HOT TUB ZONES

### ZONE 1

Core Zone

### ZONE 4

Reflexology

### ZONE 3

Upper Body

### ZONE 2

Overall Body



## IMMERSION THERAPY

### COLOR THERAPY

### COLOR THERAPY

### HYDROVORTEX

### AIR THERAPY





PHOTO COURTESY OF BENENATI POOLS, UTICA, MICHIGAN



# Our Customized Wellness Programs

One of the most powerful benefits of revolving your life around water is hydrotherapy. Hydropool has been innovating in this area for over 40 years and has developed customized wellness programs designed to help our customers with whatever ails them. Our easy-to-use topside controls allow you to achieve desired results, all at the touch of a button.



## 1. LEG PAIN

### Treatment Program

**Get back and on your feet again with our 25 Minute Program that uses three zones targeting core leg muscles to massage tightness and soothe joints.**

We recommend adding optional Air Therapy and our DreamScent Aromatherapy with scents like Bergamot & Lemongrass or Tangerine & Grapefruit.



## 2. DIET BOOST

### Treatment Program

**Compliment a healthy eating plan with our 30 Minute Program that uses three zone targeting.**

We recommend our DreamScent Aromatherapy with scents like Tangerine & Grapefruit.



## 3. HEADACHE

### Treatment Program

**Don't let a headache slow you down. Our 20 Minute Program uses three zones that target neck and shoulder muscle that play a critical role in easing head pain.**

We recommend adding optional Air Therapy and our DreamScent Aromatherapy with scents like Ylang Ylang or Tangerine.



## 4. STRESS

### Treatment Program

**Life is more hectic than ever, which makes it easy to let stress build up. Our 25 Minute Program uses three zone targeting.**

We recommend adding our DreamScent Aromatherapy with scents like Bergamot & Lemongrass or Ylang Ylang.



## 5. BACK PAIN

### Treatment Program

**Stand strong with our 25 Minute Program that uses three zones targeting both upper and lower back muscles to massage away tightness.**

We recommend adding our DreamScent Aromatherapy with scents like Ginger or Spearmint & Eucalyptus.



## 6. SPORTS RECOVERY

### Treatment Program

**Quick recovery from your training has been proven to increase performance.**

**Our 35 Minute Program uses three zone to help you get back on your feet.**

We recommend adding optional Air Therapy and our DreamScent Aromatherapy with scents like Spearmint & Eucalyptus or Ginger.



## 7. INSOMNIA

### Treatment Program

**A good sleep is critical to a healthy and productive life. Our 20 Minute Program uses three zones that relax and soothe muscles and mind.**

We recommend adding our DreamScent Aromatherapy with scents like Chamomile or Bergamot & Lemongrass.



## 8. FULL BODY AWAKENING

### Treatment Program

**Awaken all your senses with our quick 10 Minute Program that uses two zones to target.**

We recommend adding optional Air Therapy and our DreamScent Aromatherapy with scents like Ginger or Ylang Ylang.





#### HYDROPOOL EXCLUSIVE FEATURE



## Powered By Self-Cleaning<sup>†</sup> Technology

We know that one of the biggest challenges for our customers is the time they need to set aside for maintenance. Now, with our patented Self-Cleaning<sup>†</sup> technology, Hydropool hot tubs clean<sup>†</sup> more so you clean less.

The Self-Cleaning<sup>†</sup> System cleans 100% of the water in only 10 minutes. That's an incredible twelve times in two hours! This is not your run of the mill hot tub vacuum.

**It's an intricate and innovative cleaning<sup>†</sup> system using multiple technologies to clean<sup>†</sup> the water.**



## 1. HydroClean<sup>+</sup> Filtration Jets OPTIMIZED SURFACE FILTRATION

The design of our seating and the strategically placed jets create a continuous flow of water that pushes all floating debris towards the High Flow Skimmer, boosting the efficiency of our Self-Cleaning<sup>+</sup> system.

## 2. High Flow Skimmer & Pre-filter KEEPS THE WATER SURFACE CLEAN<sup>+</sup>

Our specially designed seating is built to work with your High Flow Skimmer and pre-filter, removing floating debris and oils. This also prevents larger debris from clogging the pump and heater, which increases filtration, moves debris into the pre-filter, and extends micro-filter cleaning<sup>+</sup> cycles.

## 3. HydroClean<sup>+</sup> Floor Vacuum KEEPS THE FLOOR CLEAN<sup>+</sup>

There's no need to vacuum your hot tub. Hydromax watercare products are more effectively circulated, removing heavy debris (such as dirt and grit) right down to the floor.

## 4. Pressurized Micro-Filtration CLEANS<sup>+</sup> 100% OF THE WATER EVERY 10 MINUTES

HydroClean<sup>+</sup> Filter was designed to keep the water clean<sup>+</sup>. Extended cleaning cycles and easy to access filters result in an easy, stress-free usage. Plus no odour escapes during hot tub use, leaving you with one less thing to worry about.

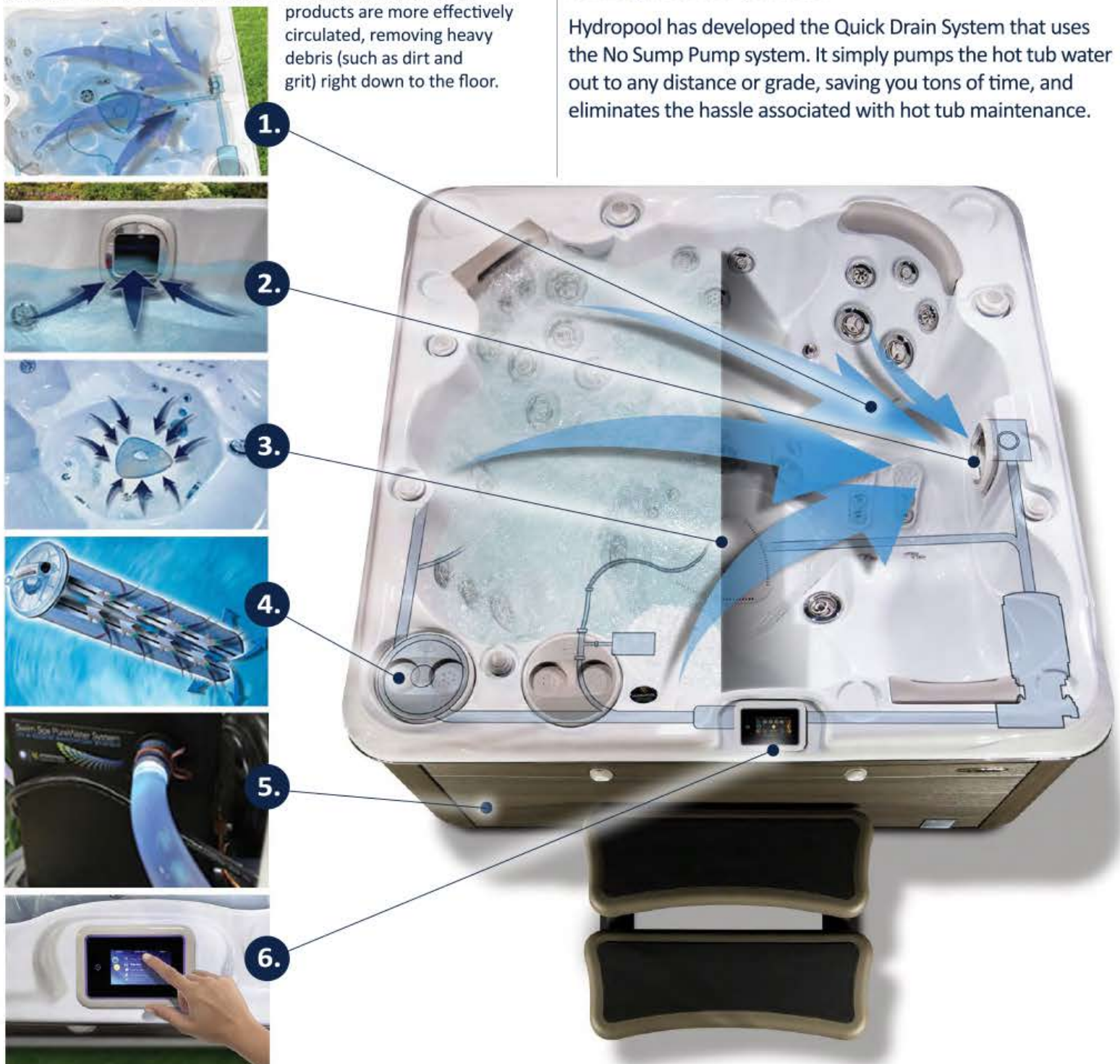
## 5. PureWater System ADVANCED SYSTEM

Designed to keep your Hydromax Hot Tub water clean<sup>+</sup> and clear the way nature intended.

## 6. Self-Clean<sup>+</sup> Indicator ALWAYS ON THE JOB

Our Worry-Free Indicator designates that the Self-Clean<sup>+</sup> and EcoHeat Exchange systems are both operating, using multiple technologies to clean<sup>+</sup> your water.

Hydromax has developed the Quick Drain System that uses the No Sump Pump system. It simply pumps the hot tub water out to any distance or grade, saving you tons of time, and eliminates the hassle associated with hot tub maintenance.















#### HYDROPOOL EXCLUSIVE FEATURE



## Made In Canada For Canadian Winters

At Hydropool, our world is our water. We not only engineer our hot tubs to care for water, clean<sup>†</sup> it and preserve it for generations to come but our commitment to a healthy planet extends beyond water.

One of the most frequent questions we're asked is about the cost of keeping your hot tub at those ideal temperatures (around 100° F/37° C).

Thanks to our innovative HydroWise Energy Efficient Insulation and our superior 4 inch HydroWise Hard Cover, we've mastered the art of keeping the heat in and the cold out. Combine this with the fact that our hot tubs are engineered to be the most energy efficient in the world. Meaning, you can enjoy your hot tub for just pennies a day.



*We have always been developing new ways to better our energy efficiency...*

**1980** Engineered the first Self-Cleaning<sup>†</sup> System to better energy efficiency.

**1981** Spray Foam insulation on shell to improve energy efficiency.



## 1. SELF CLEANING<sup>†</sup> TECHNOLOGY Designed To Extend Your Water Life

The life of the water in a Hydropool Hot Tub will be extended due to the multiple technologies used.

**COMMERCIAL GRADE FILTRATION** Hydropool Hot Tubs Self-Cleaning technology cleans<sup>†</sup> 100 percent of the water in only ten minutes which means you will have cleaner water faster.

**PUREWATER SYSTEM** Designed to keep your Hydropool Hot Tub water clean<sup>†</sup> and clear the way nature intended.

## 2. POLYMER BASE & EVERLAST CABINETRY Built To Last

**PROTECTION** The fully sealed polymer base and Everlast cabinets are designed to keep the warm air in and the elements & rodents out.

**CLEAN MANUFACTURING** Made from 100% recycled and recyclable material Hydropool is committed to reduce, reuse and recycle material to eliminate as much waste as possible.

## 3. TRIPLE THERMAL SHIELD SYSTEM Engineered To Lower Your Energy Costs

**NASA TECHNOLOGY** Our Triple Thermal Shield System reflects the residual heat of the pumps, shell and plumbing back into the hot tub. This means, the heater does not need to turn on as often, saving you money.

**COMPARE AGAINST THE REST** Hydropool Hot Tubs are ranked as one of the top four most energy efficient hot tubs in the world by the California Energy Commission. Please Consult our Hydrowise Energy Guide.

## 4. ECOHEAT EXCHANGE TECHNOLOGY Hybrid Heating

**HYDROWISE THERMAL VENTS** Each pump creates 1.5 kw of waste heat, the EcoHeat Exchange technology helps control the temperature of the hot tub without the heater ever coming on. The fully adjustable HydroWise Thermal Vents maximize energy efficiency for any season and any climate.

## 5. HYDROWISE HARD COVER Locks Heat In Keeps The Element Out

**MADE FOR CANADIAN WINTERS** The Hydropool HydroWise Hard Cover is a heavy duty tapered locking safety hard cover that has an insulated baffle in the fold area that is designed to be the most energy efficient hardcover in the industry. This safety cover locks on both sides to keep animals out and children safe.



1.



2.



3.



5.




4.

**1992** First use of Full Foam Insulation.  
**1996** Changed to perimeter foam.  
**2000** Perimeter foam to HydroWise Double Thermal Shield System.  
**2005** Introduction of EcoHeat Exchange technology.  
**2008** Launch of Evergreen Carbon Neutral Program.  
**2010** Introduction of Evergreen Pump & black pipe technology.  
**2013** Addition of Low Voltage Self-Clean Filtration pump.  
**2017** New Low Amperage pump.  
**2018** Introduction of the Triple Thermal Shield System.  
**2019** Introduced the PureWater System.







A photograph of a person's arm reaching into a pond. The arm is wearing a red bracelet and is touching the water. There are lily pads in the foreground and background. The sky is bright and hazy. A dark blue rectangular box is overlaid on the image, containing white text.

—  
NOTHING IS  
SOFTER OR  
STRONGER  
THAN WATER  
THAT IS OUR  
SIGNATURE  
—



# Signature Hot Tub Collection

Powered by  
**Self-Cleaning<sup>+</sup>**  
**Technology**

## IF ONLY IT COULD CLEAN THE HOUSE, TOO!

The Signature Collection is the culmination of 40 years of Hydropool innovation as an industry leader. A host of exclusive features gives you the ultimate Hot Tub experience with unique hydrotherapy massage and wellness programs, a Self-Cleaning<sup>+</sup> System, and money-saving energy efficiency. With nine spa models to choose from and a wealth of finishing options, you'll find a hot tub that fits your space and style.





# At A Glance

## MODEL 395



**GOLD SERIES:**  
30" DEEP MODEL:  
SEATING: 3 Person  
TOTAL THERAPY JETS: 30

37" DEEP MODEL:  
SEATING: 3 Person  
TOTAL THERAPY JETS: 30

## MODEL 495



37" DEEP MODEL:  
SEATING: 4 Person  
**GOLD SERIES:**  
TOTAL THERAPY JETS: 30  
**PLATINUM SERIES:**  
TOTAL THERAPY JETS: 40

## MODEL 570



37" DEEP MODEL:  
SEATING: 4-5 Person  
**GOLD SERIES:**  
TOTAL THERAPY JETS: 30  
**PLATINUM SERIES:**  
TOTAL THERAPY JETS: 40

## MODEL 670



39" DEEP MODEL:  
SEATING: 5-6 Person  
**GOLD SERIES:**  
TOTAL THERAPY JETS: 35  
**PLATINUM SERIES:**  
TOTAL THERAPY JETS: 50

## MODEL 695



39" DEEP MODEL:  
SEATING: 5-6 Person  
**GOLD SERIES:**  
TOTAL THERAPY JETS: 35  
**PLATINUM SERIES:**  
TOTAL THERAPY JETS: 50

## MODEL 720



39" DEEP MODEL:  
SEATING: 6-7 Person  
**PLATINUM SERIES:**  
TOTAL THERAPY JETS: 55

## MODEL 770



39" DEEP MODEL:  
SEATING: 6-7 Person  
**PLATINUM SERIES:**  
TOTAL THERAPY JETS: 55

## MODEL 790



39" DEEP MODEL:  
SEATING: 6-8 Person  
**PLATINUM SERIES:**  
TOTAL THERAPY JETS: 60

## MODEL 970



39" DEEP MODEL:  
SEATING: 8-10 Person  
**TITANIUM SERIES:**  
TOTAL THERAPY JETS: 70





## SIGNATURE HOT TUB MODEL 395

Powered by *Self-Cleaning<sup>+</sup> Technology*

### Specifications:

Series	Gold
Freeze Protection	Yes
Self Clean <sup>+</sup> Mode	Yes
HydroClean <sup>+</sup> Floor Vacuum	Yes
HydroClean <sup>+</sup> Pressurized Filter	Yes
Programmable Filtration Cycles	Yes
Deluxe LED & Garden FX Lighting	Opt
Total Therapy Jets	30
HydroVortex Jet	Yes
HydroClean <sup>+</sup> Filtration Pump	Yes
North American 60Hz	4hp
International 50Hz	4hp
Stainless Steel HydroWise Heater NA	4Kw
Stainless Steel HydroWise Heater EU	3Kw
Mazzei Injected Ozonator	Opt
HydroFlex Foot Massage	Yes
PureWater System	Yes

### 30" DEEP MODEL SPECS.

**SEATING:** 3 Person

**OUTER DIMENSIONS:** 85" x 65" x 30"\*  
(215.9 cm x 165.1 cm x 76.2 cm)\*

**VOLUME:** 198 US gal / 753 L

**WEIGHT FULL:** 2,241 lbs / 1017 kg

### 37" DEEP MODEL SPECS.

**SEATING:** 3 Person

**OUTER DIMENSIONS:** 85" X 65" X 37"\*  
(215.9 cm X 165.1 cm X 93.98 cm)\*

**VOLUME:** 217 US gal / 825 L

**WEIGHT FULL:** 2,441 lbs / 1,108 kg

\* +/- tolerance of 1/4"

Model 395 Gold in Silver Marble shown here.

### HYDROGUIDE

#### SIGNATURE MODEL 395 Gold

This hot tub meets or exceeds the energy efficiency standards defined by the state of California.

AMBIENT OUTDOOR TEMPERATURE:	N. AMERICAN MONTHLY COST:	EUROPEAN MONTHLY COST:
LOW: 45° F / 7° C	\$19.04 USD	€ 27.83
HIGH: 75° F / 24° C	\$8.60 USD	€ 12.56

Specific Pump Power: N. American 14.38 W/GPM - European 49.00 W/(m³/h)

Superior in style and function. With room for up to three adults, the Signature 395 Hot Tub offers a low profile that makes it simple to enter and exit the tub. This compact hot tub fits perfectly into a corner of a cozy patio. With seats that offer a variety of unique jet formations, you can relieve tired muscles, ease stress and release tension every day. A multi-colored LED footwell also adds ambiance to your hydrotherapy experience.



## SIGNATURE HOT TUB MODEL 495

Powered by *Self-Cleaning<sup>+</sup> Technology*

### Specifications:

Series	Gold	Platinum
Freeze Protection	Yes	Yes
Self Clean <sup>+</sup> Mode	Yes	Yes
HydroClean <sup>+</sup> Floor Vacuum	Yes	Yes
HydroClean <sup>+</sup> Pressurized Filter	Yes	Yes
Programmable Filtration Cycles	Yes	Yes
Deluxe LED & Garden FX Lighting	Opt	Opt
Total Therapy Jets	30	40
HydroVortex Jet	Yes	Yes
HydroClean <sup>+</sup> Filtration Pump	Yes	Yes
North American 60Hz	4hp	3hp & 4hp
International 50Hz	4hp	3hp & 4hp
Stainless Steel HydroWise Heater NA	4Kw	4Kw
Stainless Steel HydroWise Heater EU	3Kw	3Kw
Mazzei Injected Ozonator	Opt	Opt
HydroFlex Foot Massage	Yes	Yes
PureWater System	Yes	Yes

### 37" DEEP MODEL SPECS.

**SEATING:** 4 Person

**OUTER DIMENSIONS:** 79" x 75" x 37"\*  
(200.66 cm x 190.5 cm x 93.98 cm)\*

**VOLUME:**

278 US gal / 1,055 L

**WEIGHT FULL:**

2,980 lbs / 1,352 kg

\* +/- tolerance of 1/4"

Model 495 Platinum in Silver Marble shown here.

### HYDROGUIDE

#### SIGNATURE MODEL 495 Gold & Platinum

This hot tub meets or exceeds the energy efficiency standards defined by the state of California.

AMBIENT OUTDOOR TEMPERATURE:	N. AMERICAN MONTHLY COST:	EUROPEAN MONTHLY COST:
LOW: 45° F / 7° C	\$19.65 USD	€ 28.71
HIGH: 75° F / 24° C	\$8.88 USD	€ 12.97

Specific Pump Power: N. American Gold: 14.52 W/GPM - Platinum 11.96 W/GPM - European Gold: 49.30 W/(m³/h) - Platinum 47.57 W/(m³/h)

The absolute best hot tub ownership experience in a small four-person package. The Signature 495 Hot Tub offers the ultimate in energy efficiency and is combined with our wellness programs and our science of immersion. It is, without a doubt, the best hydrotherapy experience in a hot tub.





PHOTO COURTESY OF THE HOT TUB STORE & MORE, WAYNESVILLE, NORTH CAROLINA, USA



PHOTO COURTESY OF LONDON ESSEX HOT TUBS, LONDON, ENGLAND





## SIGNATURE HOT TUB MODEL 570

Powered by *Self-Cleaning<sup>+</sup> Technology*

### Specifications:

Series	Gold	Platinum
Freeze Protection	Yes	Yes
Self Clean <sup>+</sup> Mode	Yes	Yes
HydroClean <sup>+</sup> Floor Vacuum	Yes	Yes
HydroClean <sup>+</sup> Pressurized Filter	Yes	Yes
Programmable Filtration Cycles	Yes	Yes
Deluxe LED & Garden FX Lighting	Opt	Opt
Total Therapy Jets	30	40
HydroVortex Jet	Yes	Yes
HydroClean <sup>+</sup> Filtration Pump	Yes	Yes
North American 60Hz	4hp	3hp & 4hp
International 50Hz	4hp	3hp & 4hp
Stainless Steel HydroWise Heater NA	4Kw	4Kw
Stainless Steel HydroWise Heater EU	3Kw	3Kw
Mazzei Injected Ozonator	Opt	Opt
HydroFlex Foot Massage	Yes	Yes
PureWater System	Yes	Yes

### 37" DEEP MODEL SPECS.

**SEATING:** 4-5 Person  
**OUTER DIMENSIONS:**

80" x 80" x 37"\*  
(203.2 cm x 203.2 cm x 93.98 cm)\*

**VOLUME:**  
295 US gal / 1,119 L

**WEIGHT FULL:**  
3,143 lbs / 1,426 kg

\* +/- tolerance of 1/4"

Model 570 Platinum in Silver Marble shown here.

### HYDROGUIDE

**SIGNATURE MODEL 570 Gold & Platinum** This hot tub meets or exceeds the energy efficiency standards defined by the state of California.

AMBIENT OUTDOOR TEMPERATURE:	N. AMERICAN MONTHLY COST:	EUROPEAN MONTHLY COST:
LOW: 45° F / 7° C	\$22.58 USD	€ 33.00
HIGH: 75° F / 24° C	\$9.13 USD	€ 13.34

Specific Pump Power: N. American Gold: 14.57 W/GPM - Platinum 11.97 W/GPM - European Gold: 49.65 W/(m³/h) - Platinum 47.63 W/(m³/h)

The 570 Signature Hot Tub incorporates a Never-Float Lounger and four full seats that hug your body. Easy entry access through non-slip steps built right into the interior helps you quickly slide into your tub. This is one of our best-selling spas. It's perfect for the needs of two people, who want to be able to entertain more. With its spacious interior and multi-level seating, this roomy hot tub is enough to treat you and four friends like royalty. Its European styling makes it a beautiful addition to anyone's castle. Our exclusively designed zoned jetting delivers a balanced, soothing massage and a rejuvenating hot tub experience.



## SIGNATURE HOT TUB MODEL 670

Powered by *Self-Cleaning<sup>+</sup> Technology*

### Specifications:

Series	Gold	Platinum
Freeze Protection	Yes	Yes
Self Clean <sup>+</sup> Mode	Yes	Yes
HydroClean <sup>+</sup> Floor Vacuum	Yes	Yes
HydroClean <sup>+</sup> Pressurized Filter	Yes	Yes
Programmable Filtration Cycles	Yes	Yes
Deluxe LED & Garden FX Lighting	Opt	Opt
Total Therapy Jets	35	50
HydroVortex Jet	Yes	Yes
HydroClean <sup>+</sup> Filtration Pump	Yes	Yes
North American 60Hz	4hp	3hp & 4hp
International 50Hz	4hp	3hp & 4hp
Stainless Steel HydroWise Heater NA	4Kw	4Kw
Stainless Steel HydroWise Heater EU	3Kw	3Kw
Mazzei Injected Ozonator	Opt	Opt
HydroFlex Foot Massage	Yes	Yes
PureWater System	Yes	Yes

### 39" DEEP MODEL SPECS.

**SEATING:** 5-6 Person  
**OUTER DIMENSIONS:**

84" X 84" X 39"\*  
(213.36 cm x 213.36 cm x 99.06 cm)\*

**VOLUME:**  
305 US gal / 1,161 L

**WEIGHT FULL:**  
3,353 lbs / 1,521 kg

\* +/- tolerance of 1/4"

Model 670 Platinum in Silver Marble shown here.

### HYDROGUIDE

**SIGNATURE MODEL 670 Gold & Platinum** This hot tub meets or exceeds the energy efficiency standards defined by the state of California.

AMBIENT OUTDOOR TEMPERATURE:	N. AMERICAN MONTHLY COST:	EUROPEAN MONTHLY COST:
LOW: 45° F / 7° C	\$23.50 USD	€ 34.34
HIGH: 75° F / 24° C	\$10.62 USD	€ 15.51

Specific Pump Power: N. American Gold: 14.66 W/GPM - Platinum 12.07 W/GPM - European Gold: 49.95 W/(m³/h) - Platinum 48.00 W/(m³/h)

Both design and performance, the Signature 670 Hot Tub features Thermal Shield Insulation Technology, Zone Therapy with Wellness Programs, and much more. Our six-person contemporary design and innovations like the Hydrother Program are perfect for those who want the very best in Hydrotherapy technology.



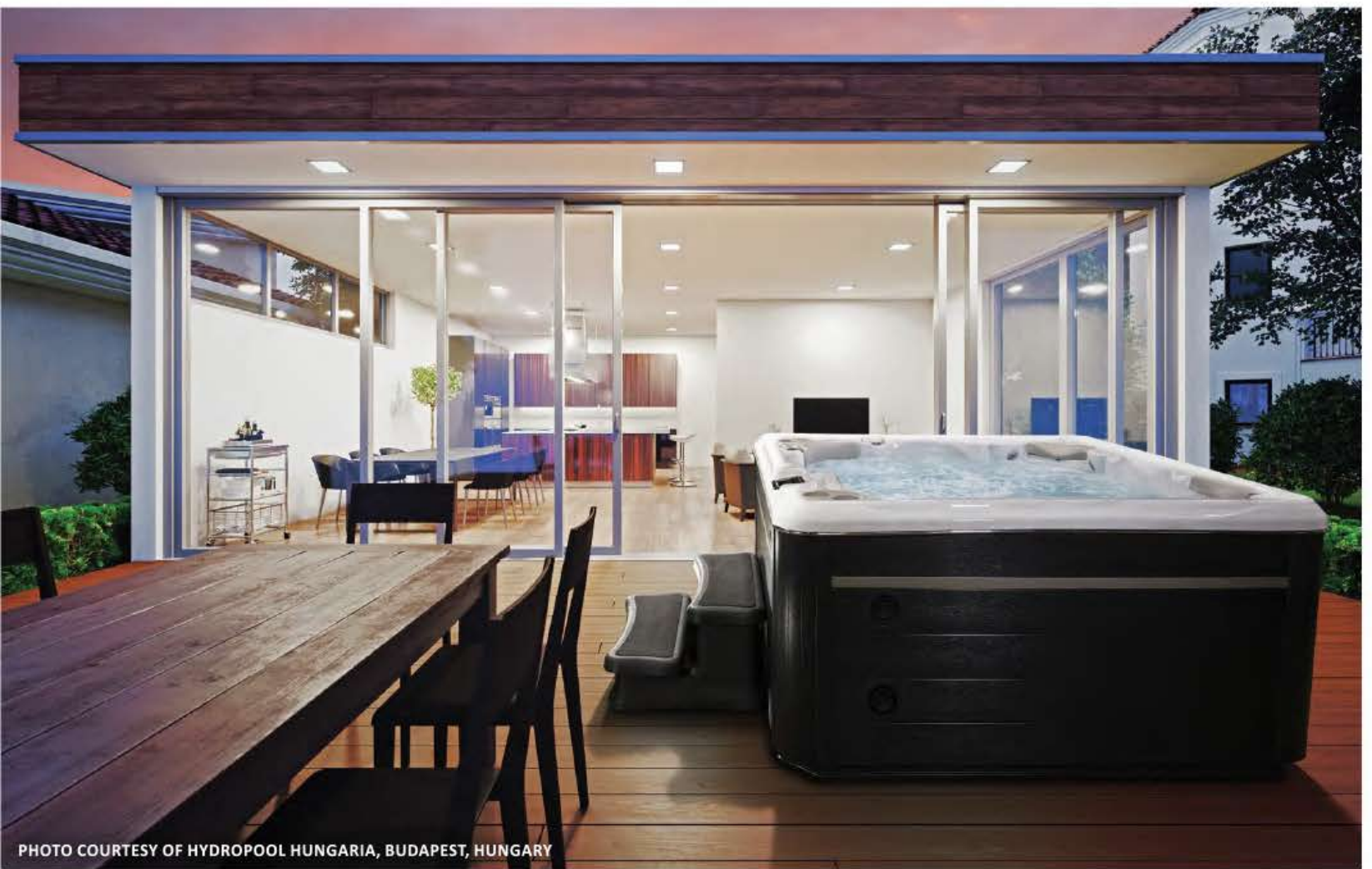


PHOTO COURTESY OF HYDROPOOL HUNGARIA, BUDAPEST, HUNGARY



PHOTO COURTESY OF BACKYARD RETREAT, OAKVILLE, ONTARIO





## SIGNATURE HOT TUB MODEL 695

Powered by *Self-Cleaning<sup>+</sup> Technology*

### Specifications:

Series	Gold	Platinum
Freeze Protection	Yes	Yes
Self Clean <sup>+</sup> Mode	Yes	Yes
HydroClean <sup>+</sup> Floor Vacuum	Yes	Yes
HydroClean <sup>+</sup> Pressurized Filter	Yes	Yes
Programmable Filtration Cycles	Yes	Yes
Deluxe LED & Garden FX Lighting	Opt	Opt
Total Therapy Jets	35	50
HydroVortex Jet	Yes	Yes
HydroClean <sup>+</sup> Filtration Pump	Yes	Yes
North American 60Hz	4hp	3hp & 4hp
International 50Hz	4hp	3hp & 4hp
Stainless Steel HydroWise Heater NA	4Kw	4Kw
Stainless Steel HydroWise Heater EU	3Kw	3Kw
Mazzei Injected Ozonator	Opt	Opt
HydroFlex Foot Massage	Yes	Yes
PureWater System	Yes	Yes

### 39" DEEP MODEL SPECS.

**Seating:** 5-6 Persons

**Outer Dimensions:**

84" X 84" X 39"\*  
(213.36 cm x 213.36 cm x 99.06 cm)\*

**Volume:**

359 US gal / 1,365 L

**Weight Full:**

3,820 lbs / 1,733 kg

\* +/- tolerance of 1/4"

Model 695 Platinum in Silver Marble shown here.

### HYDROGUIDE

**SIGNATURE MODEL 695 Gold & Platinum** This hot tub meets or exceeds the energy efficiency standards defined by the state of California.

AMBIENT OUTDOOR TEMPERATURE:	N. AMERICAN MONTHLY COST:	EUROPEAN MONTHLY COST:
LOW: 45° F / 7° C	\$25.50 USD	€ 37.26
HIGH: 75° F / 24° C	\$11.51 USD	€ 16.82

Specific Pump Power: N. American Gold: 14.66 W/GPM - Platinum 12.04 W/GPM - European Gold: 49.95 W/(m³/h) - Platinum 47.89 W/(m³/h)

The ultimate in advanced relaxation, the Signature 695 Hot Tub has modern styling, multi-color LED lighting and an S-Shaped Immersion Lounger that allows you to sink into the ambience. With expansive barrier-free seating for up to six people, everyone has room to totally relax. This hot tub is the complete hydrotherapy experience.



## SIGNATURE HOT TUB MODEL 720

Powered by *Self-Cleaning<sup>+</sup> Technology*

### Specifications:

Series	Platinum
Freeze Protection	Yes
Self Clean <sup>+</sup> Mode	Yes
HydroClean <sup>+</sup> Floor Vacuum	Yes
HydroClean <sup>+</sup> Pressurized Filter	Yes
Programmable Filtration Cycles	Yes
Deluxe LED & Garden FX Lighting	Opt
Total Therapy Jets	55
HydroVortex Jet	Yes
HydroClean <sup>+</sup> Filtration Pump	Yes
North American 60Hz	3hp & 4hp
International 50Hz	3hp & 4hp
Stainless Steel HydroWise Heater NA	4Kw
Stainless Steel HydroWise Heater EU	3Kw
Mazzei Injected Ozonator	Opt
HydroFlex Foot Massage	Yes
PureWater System	Yes

### 39" DEEP MODEL SPECS.

**Seating:** 6-7 Persons

**Outer Dimensions:**

90" X 90" X 39"\*  
(228.6 cm x 228.6 cm x 99.06 cm)\*

**Volume:**

399 US gal / 1,515 L

**Weight Full:**

4,192 lbs / 1,902 kg

\* +/- tolerance of 1/4"

Model 720 Platinum in Silver Marble shown here.

### HYDROGUIDE

**SIGNATURE MODEL 720 Platinum** This hot tub meets or exceeds the energy efficiency standards defined by the state of California.

AMBIENT OUTDOOR TEMPERATURE:	N. AMERICAN MONTHLY COST:	EUROPEAN MONTHLY COST:
LOW: 45° F / 7° C	\$25.63 USD	€ 37.45
HIGH: 75° F / 24° C	\$11.58 USD	€ 16.92

Specific Pump Power: N. American 12.05 W/GPM - European 47.92 W/(m³/h)

The expansive Signature 720 Hot Tub comfortably seats six - seven people. Everyone has room to enjoy state-of-the-art jets, two hydrotherapy jet pumps, and four zones with patented wellness programs. It's powerful relaxation at its finest.





PHOTO COURTESY OF CK SPAS, SAINT-EUSTACHE, QUEBEC



PHOTO COURTESY OF AARON POOLS, BOSTON, MASSACHUSETTS





## SIGNATURE HOT TUB MODEL 770

Powered by *Self-Cleaning<sup>+</sup> Technology*

### Specifications:

Series	Platinum
Freeze Protection	Yes
Self Clean <sup>+</sup> Mode	Yes
HydroClean <sup>+</sup> Floor Vacuum	Yes
HydroClean <sup>+</sup> Pressurized Filter	Yes
Programmable Filtration Cycle	Yes
Deluxe LED & Garden FX Lighting	Opt
Total Therapy Jets	55
HydroVortex Jet	Yes
HydroClean <sup>+</sup> Filtration Pump	Yes
North American 60Hz	3 & 4hp
International 50Hz	3 & 4hp
Stainless Steel HydroWise Heater NA	4Kw
Stainless Steel HydroWise Heater EU	3Kw
Mazzei Injected Ozonator	Opt
HydroFlex Foot Massage	Yes
PureWater System	Yes

### 39" DEEP MODEL SPECS.

**Seating:** 6-7 Persons

**Outer Dimensions:**  
90" X 90" X 39"\*  
(228.6 cm X 228.6 cm  
X 99.06 cm)\*

**Volume:**  
423 US gal / 1,608 L

**Weight Full:**  
4,428 lbs / 2,009 kg

\* +/- tolerance of 1/4"

Model 770 Platinum in  
Silver Marble shown here.

The 770 Signature Hot Tub has the best of everything, with room for up to seven adults and a variety of seat heights formed to fit diverse body types comfortably. With custom Wellness Zone jet configurations, this is the most popular one lounger hot tub in the Hydropool line-up. Experience the four zones, from soft rolling massages to a deep tissue release. Just press a button and let the hot tub massage take over to give you the only automated hydrotherapy experience in the industry.

### HYDROGUIDE

**SIGNATURE MODEL 770 Platinum**  
This hot tub meets or exceeds the energy efficiency standards defined by the state of California.

AMBIENT OUTDOOR TEMPERATURE:	N. AMERICAN MONTHLY COST:	EUROPEAN MONTHLY COST:
LOW: 45° F / 7° C	\$25.82 USD	€ 37.74
HIGH: 75° F / 24° C	\$11.66 USD	€ 17.04

Specific Pump Power: N. American 12.08 W/GPM - European 48.05 W/(m³/h)



## SIGNATURE HOT TUB MODEL 790

Powered by *Self-Cleaning<sup>+</sup> Technology*

### Specifications:

Series	Platinum
Freeze Protection	Yes
Self Clean <sup>+</sup> Mode	Yes
HydroClean <sup>+</sup> Floor Vacuum	Yes
HydroClean <sup>+</sup> Pressurized Filter	Yes
Programmable Filtration Cycles	Yes
Deluxe LED & Garden FX Lighting	Opt
Total Therapy Jets	60
HydroVortex Jet	Yes
HydroClean <sup>+</sup> Filtration Pump	Yes
North American 60Hz	3hp & 4hp
International 50Hz	3hp & 4hp
Stainless Steel HydroWise Heater NA	4Kw
Stainless Steel HydroWise Heater EU	3Kw
Mazzei Injected Ozonator	Opt
HydroFlex Foot Massage	Yes
PureWater System	Yes

### 39" DEEP MODEL SPECS.

**Seating:** 6-8 Persons

**Outer Dimensions:**  
94" X 94" X 39"\*  
(238.76 cm x 238.76 cm  
x 99.06 cm)\*

**Volume:**  
391 US gal / 1,485 L

**Weight Full:**  
4,241 lbs / 1,924 kg

\* +/- tolerance of 1/4"

Model 790 Platinum in  
Silver Marble shown here.

The Signature 790 Hot Tub is the only double lounger with room for up to eight adults, it offers the perfect blend of sore muscle relief and plenty of space to socialize. This hot tub offers a luxurious experience and includes two Hydrotherapy Jet Pumps, honeymoon style loungers and diverse seat options sculpted to harmonize with your body.

### HYDROGUIDE

**SIGNATURE MODEL 790 Platinum**  
This hot tub meets or exceeds the energy efficiency standards defined by the state of California.

AMBIENT OUTDOOR TEMPERATURE:	N. AMERICAN MONTHLY COST:	EUROPEAN MONTHLY COST:
LOW: 45° F / 7° C	\$26.02 USD	€ 38.02
HIGH: 75° F / 24° C	\$11.75 USD	€ 17.17

Specific Pump Power: N. American 12.11 W/GPM - European 48.17 W/(m³/h)





PHOTO COURTESY OF RAINBOW HOT TUBS, COLUMBUS, OHIO



PHOTO COURTESY OF CLAIR AZUR, CANNES, FRANCE



# SIGNATURE HOT TUB MODEL 970

Powered by *Self-Cleaning<sup>+</sup> Technology*



## Specifications:

Series	Titanium
Freeze Protection	Yes
Self Clean <sup>+</sup> Mode	Yes
HydroClean <sup>+</sup> Floor Vacuum	Yes
HydroClean <sup>+</sup> Pressurized Filter	Yes
Programmable Filtration Cycles	Yes
Deluxe LED & Garden FX Lighting	Opt
Total Therapy Jets	70
HydroVortex Jet	Yes
HydroClean <sup>+</sup> Filtration Pump	Yes
North American 60Hz	3 x 3hp
International 50Hz	3 x 3hp
Stainless Steel HydroWise Heater NA	5.5Kw
Stainless Steel HydroWise Heater EU	4Kw
Mazzei Injected Ozonator	Opt
HydroFlex Foot Massage	Yes
PureWater System	Yes

## 39" DEEP MODEL SPECS.

**Seating:** 7-8 Persons

**Outer Dimensions:**

110" x 94" x 39"\*  
(279.40 cm x 238.76 cm  
x 99.06 cm)\*

**Volume:**

527 US gal / 2,003 L

**Weight Full:**

5,843 lbs / 2,651 kg

\* +/- tolerance of 1/4"

Model 970 Titanium in  
Silver Marble shown here.

The Signature 970 Hot Tub has room for up to nine adults, the highest seating capacity from Hydromax. This truly has the best of everything, from the most E-Class hydrotherapy jet variety available to the three HydroMassage Hydrotherapy pumps. This is also the only Hydromax Hot Tub available in the Titanium Series and with bench and S-Shaped Loungers for a side-by-side massage session. Diverse seat options are designed to harmonize with your body, right down to the jetted footwell for your overtaxed feet. This hot tub comes complete with automated wellness programs to deliver the deepest immersion massage experience in the hot tub market.

## HYDROGUIDE

### SPA SIGNATURE MODÈLE 970

Ce spa satisfait ou excède les normes en matière de rendement énergétique définies par l'État de la Californie.

TEMPÉRATURE EXTÉRIEURE AMBIANTE :	N. AMÉRICAIN CÔÛT MENSUEL :	EUROPÉEN CÔÛT MENSUEL :
BASSE : 45° F / 7° C	39,42 \$ USD	57,61 €
HAUTE : 75° F / 24° C	17,80 \$ USD	26,01 €

Puissance spécifique de la pompe : Américain du nord 11,94 W/GPM - Europe 47,50 W/(m³/h)







PHOTO COURTESY OF BONA VISTA LEISURESCAPES TORONTO, ONTARIO



PHOTO COURTESY OF HYDROPOOL MIDLANDS, STAPLEFORD, ENGLAND



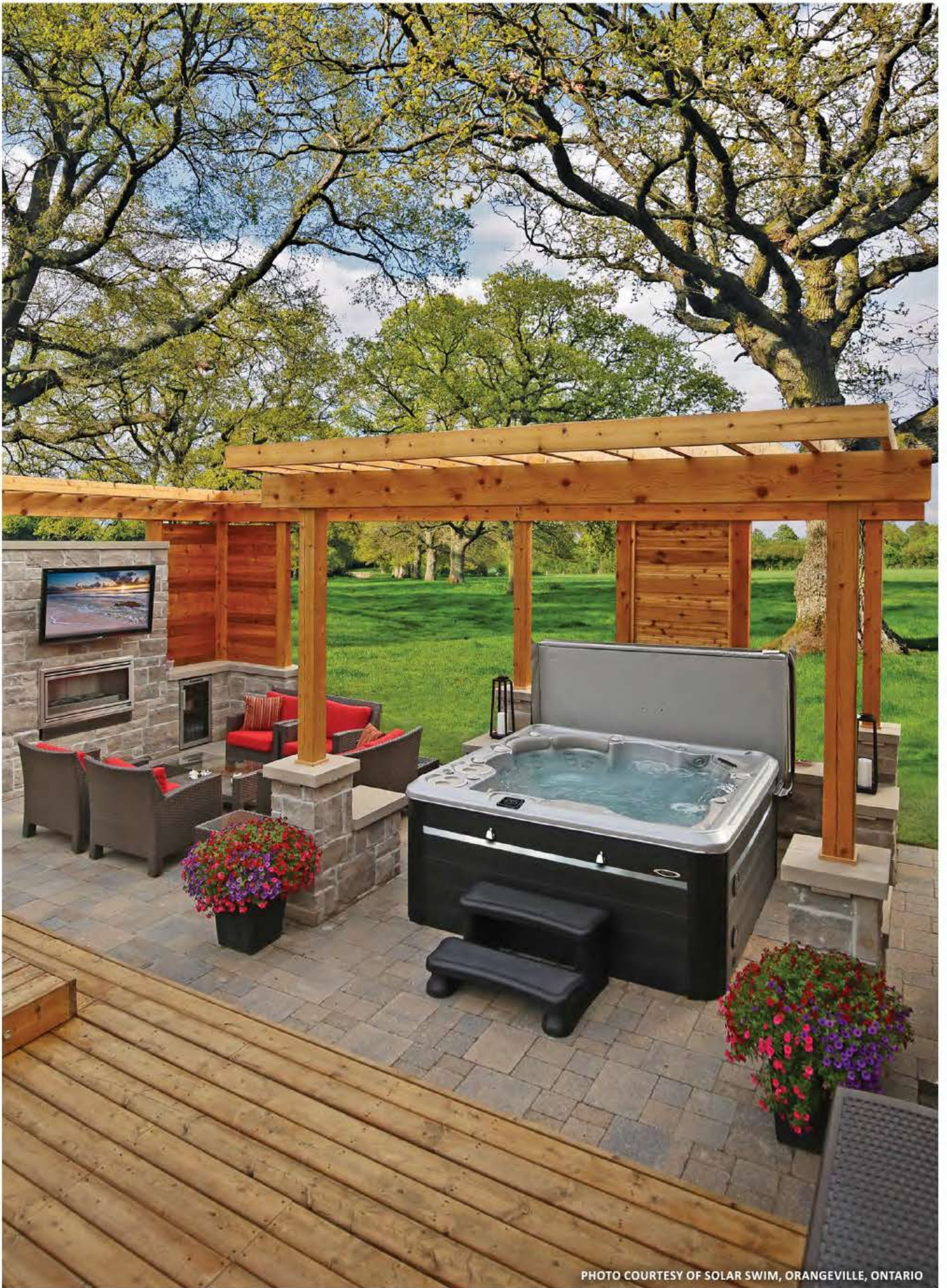


PHOTO COURTESY OF SOLAR SWIM, ORANGEVILLE, ONTARIO



# Options & Upgrades

## 1. SHELL OPTIONS

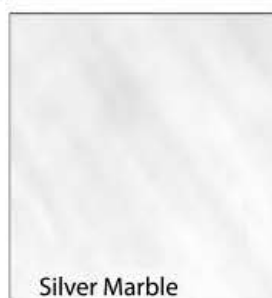
### Standard Acrylic Colors<sup>†</sup>

Your Hydropool Signature Hot Tub is available in these six colors.

## 2. CABINET OPTION

### Everlast Cabinetry with Removable Panels

Your Signature Hot Tub comes in our maintenance-free Everlast Cabinet finish. This premium quality cabinetry is installed onto a sturdy cradle substructure for the ultimate in durability and is embossed for the most realistic look possible. In the unlikely event that you require access to the plumbing or equipment, all four panels are removable for easy service access.



## OTHER POPULAR OPTIONS

### 3. iCommand System WORLD EDITION

The Smart Phone App is designed as a wireless hot tub control that allows you to pick the water care settings that fits your schedule, adjust filtration and temperature settings and create the ideal hot tub experience from anywhere in the world.



### 4. EZ Ultra PureOzone System

The system is designed for ozone to be added to keep the water clean<sup>†</sup>.



### 5. Industry-Leading Guarantee

Hydropool Hot Tubs are built to stand the test of time and offer an industry leading guarantee package. For details inquire with your local Hydropool Retailer.





## LIGHTING OPTION

### 6. Deluxe LED & Garden FX

Enjoy the added convenience and reliability of Premium LED Lighting featuring bright LED lights that sequence through blue, green & red colorations or can stay on your favorite of the three. Including two exterior cabinet sconces to illuminate the step area and four additional accent lights that beautify the perimeter.

## COVER OPTIONS

### Cover Lifter Options

All of our cover lifters are made in North America. Constructed of corrosion resistant aluminum brackets, each one has galvanized arms with comfort foam grips. All of our cover lifters are covered by a Limited Lifetime Manufacturer's Warranty.

### 7. Standard Cover Remover

Designed to work as a high or mid-mount these can be mounted to the side of the hot tub or deck mounted if the hot tub is set into the deck surround. For ease of installation this cover lifter is designed with patented sliding brackets.

### 8. UnderMount Cover Remover

Designed to work as a deck or surface mount, and can be installed using the weight of the hot tub to hold it in place. No screws, and no drilling into your hot tub cabinet is required. This cover lifter also is designed with patented sliding brackets.

### 9. Hydraulic Cover Remover Plus

Lifts your hot tub cover with greater ease thanks to 80lb dual gas shocks and is designed to mount into your hot tubs cabinet. This cover lifter can also be used on hot tubs that are in-ground installations.

## 10. STEP OPTION

### Two Tier Universal Step

This option, a two tier step makes entering and exiting your hot tub safe and easy. These steps are available in matching Midnight, Driftwood or Espresso color finishes.

## 11. POWER OPTION

### 40, 50 Or 60 amp GFCI With Sub-Panel Box\*

An optional GFCI and sub panel can be purchased for your hot tub.

\* Not available in Europe.









# Available Option Packages

## 1 TRANQUILITY PACKAGE

### Two Premium HydroFall Pillows

The adjustable "Waterfall Jet" helps release the body's natural endorphins that act as a natural pain suppressor by helping to relieve stress, headaches and pain.

### Deluxe LED Lighting

Enjoy the added convenience and reliability of Hydromax's Premium LED Lighting featuring bright LED lights that sequence through blue, green and red.

## 2 NORTHERN FALLS PACKAGE

### Northern Lights

Strategically placed LED lights provide lighting that illuminates all of the top mounted control valves; brilliantly colored and sequence through a range of colors when turned on and can be locked on to one color.

### Cascading HydroFalls

The HydroFalls package includes three Laminar fountain jets that are illuminated with brilliant color sequencing LED lights.

## 3 CHROMATHERAPY PACKAGE

### Northern Lights

Strategically placed LED lights provide lighting that illuminates all of the top mounted control valves. These are brilliantly colored and sequence through a range of colors when turned on or be locked onto your favorite.

### Deluxe LED & Garden FX

Premium lighting featuring bright LED lights that sequence through different colors or can be locked on to one color. The Garden FX Lighting with two cabinet sconces illuminates the step area with four additional accent lights.

## 4 HYDROTHERAPY PACKAGE

### Dream Scents

Take your hot tub experience to the next level with this aromatherapy feature to enhance your massage even more.

### HydroFlex Air Therapy System

10,000 perfectly aimed heated air bubbles apply ideal pressure to provide you with a truly complete therapeutic massage.

### Hydrother Lighting System

When you purchase the Hydrotherapy Package, zone therapy lighting is now included! That means there will be no guess work on what seat to sit in for the best massage experience. The Hydrother Lighting will turn on to indicate which seat is the next to sit in, when activating the Hydrother Program.

\* Only available on Platinum Series.



1



2



3



4



\* Only available on Platinum Series.





IT IS TIME  
YOU FOUND  
SERENITY









# Serenity Hot Tubs Are Built To Last From The Ground Up

Hydropool introduces an all new redesigned cabinet and frame. The new Unibody Frame cradles the all new Edgewater Shell and it all sits on a Polymer Insulated Floor sealing in the acrylic shell, cabinet and frame.

This creates a completely sealed system that keeps the heat in and the cold out in the winter. In the summer, heat can be released and regulated by the EcoHeat Exchange fully adjustable venting.

## 1. POLYMER INSULATED FLOOR

### Tough from the bottom up

Designed to keep the warmth in and everything else out. The insulated floor locks in the ambient heat from the pumps.

## 2. UNIBODY FRAME

### The strongest frame available

Specifically engineered to hold the weight of the water while adjusting to the heating and cooling that comes with summers and winters.

## 3. EDGEWATER SHELL

### Built like a completely waterproof hull of a boat

The polyester and vinylester resin are combined with fiberglass to add strength, creating the strongest shell in the industry.







## The WeatherSeal Insulation System

Our innovative HydroWise Thermal Shield Energy Efficient Insulation and superior WeatherSeal Cabinetry work in tandem with our HydroWise Hard Cover to keep the heat in and the cold out. Combine this with the fact that our hot tubs are engineered to be the most energy efficient in the world, providing 100°F / 37°C

*... All for just pennies a day.*

### 1. POLY FILM BARRIER

Supports plumbing and weight of water, minimizes vibration.

### 2. HYDROWISE THERMAL BLANKETS

Wrap the plumbing and floor, reflecting radiant heat back into the hot tub, creating the first thermal barrier.

### 3. 2LB CLOSED CELL FOAM

Seals the lip of the tub to prevent heat loss; insulates floor of hot tub.

### 4. WEATHERSEAL CABINE

Locks in the waste heat given off by pumps and heater by reflecting radiant heat inside cabinetry of the hot tub. The cabinet panels can be easily removed for access on all sides of the hot tub.

### 5. HYBRID HEAT ADVANTAGE

The combination of insulation materials allows our WeatherSeal Insulation System to capture the radiant heat from the plumbing and equipment, significantly reducing energy consumption.





1.

## The Serenity Hot Tub ClearSpring Filtration System

This system for Serenity Hot Tubs is a three-stage filtration that keeps water cleaner† and clearer. The first stage is the Ultra Flow Grill with its Catch Barrier. This prevents debris from re-entering the hot tub. The second stage Skimmer Net traps large debris before reaching the filter cartridge. The new ClearSpring Filtration System, with its much larger surface area, filters more water than ever before. It's made out of micro-fiber and contains a dense inner core that traps the smallest particles and holds them. Clean and healthy spa water is the foundation of all Serenity Hot Tubs. You can enjoy the cleanest water with the easiest system to operate and maintain your Serenity Hot Tub's performance.

### 1. ULTRA FLOW GRILL

Allows maximum flow of water, quickly removing debris from the hot tub water. The Catch Barrier prevents debris from re-entering the hot tub.

### 2. ULTRA FLOW SKIMMER NET

The skimmer net eliminates the need to skim the surface and is the first line of defence. Catches any and all debris too large for filter to catch.

### 3. DUAL FILTRATION

This dual design maximizes the surface area and captures debris more efficiently. It can be easily accessed, yet hidden from eye sight and has a built-in water care dispenser.

### 4. EVERGREEN PUMP

Filters 87 US Gallons of spa water per minute and has an energy efficient design.

2.



3.



4.





# Science Of Immersion In A Serenity Hot Tub.

Through our understanding of Zone Hydrotherapy and ergonomics of the human body, Hydropool has taken the Science of Immersion to the next level. We have constantly innovated to create a line of hot tub that uses Zone Therapy as its method to interact with the human body in the most natural and effective way possible. Hydropool Zone Therapy is designed around you and your usage of the hot tub to help you benefit from a general sense of well-being. We are all unique individuals genetically and have varying lifestyles that all play a role in defining our sensitivity to a release of various tensions.

## ZONE THERAPY:

Each zone is designed to massage a specific part of your body:

### ZONE 1: CORE ZONE

#### Activation of the paravertebral muscles

Vertebral fatigue contributes to headaches. This zone releases tension in the Dorsal Muscles.

### ZONE 2: OVERALL ZONE

#### Activation of leg & lumbar muscles

Promotes improved circulation in the lower part of the body and allows for venous return and lightened legs.

### ZONE 3: UPPER BACK ZONE

#### Activation of upper back, neck and shoulder muscles

Eliminates tension in trapezoid muscles and neck by releasing tensions in Solar Plexus area.

### ZONE 4: REFLEXOLOGY

#### Activation of foot arch muscles

Deeply massages the small venous areas in your foot arch offering relief as your feet take the brunt of most sports.



1.



2.



3.



4.

## Each zone has four features, designed to maximize your hydrotherapy:

### 1. TYPE OF JETS

The type of jet is crucial to a proper massage. Our E-55 jet is designed purposely for a deep tissue massage and our E-40 Jet is designed for a gentle massage.

### 2. JET PLACEMENT

Our hydrotherapy jets are specifically designed for each zone so that the superior benefits of hydrotherapy are achieved. Our different jet patterns are designed to work different muscle groups.

### 3. SEATING DESIGNED AROUND YOU

Designed to work with your body's natural structure and functions to provide maximum comfort and functionality. Our ergonomic seats support the skeletal structure so that the muscular system does not have to; it removes stress from muscles and joints and allows the body to relax.

### 4. DURATION IN SEAT

The last component of Zone Therapy is the duration of time that a person spends in each seat (Zone) of the hot tub. The duration in seat combined with the sequence of seats is critical to the performance of the Zone Therapy.





# Serenity Hot Tub Collection

If you want elegant styling and exceptional performance, check out the Serenity Collection. You'll learn what makes these spas special, including unique massages, spacious interiors and a range of models that fit from four to seven adults. Plus, you can count on legendary Hydromaster quality, WeatherSeal Insulation, and innovative water care options, like the PureWater System that helps you spend less time caring for your spa, and more time enjoying it.





# At a glance...

## Model 4300



36" DEEP MODEL:  
SEATING: 3 Person  
TOTAL ALL ACTIVE  
THERAPY JETS: 31

## Model 4500



36" DEEP MODEL:  
SEATING: 4 Person  
TOTAL ALL ACTIVE  
THERAPY JETS: 33

## Model 5900



36" DEEP MODEL:  
SEATING: 5 Person  
TOTAL ALL ACTIVE  
THERAPY JETS: 41

## Model 6600



36" DEEP MODEL:  
SEATING: 6 Person  
TOTAL ALL ACTIVE  
THERAPY JETS: 31

## Model 6800



36" DEEP MODEL:  
SEATING: 6 Person  
TOTAL ALL ACTIVE  
THERAPY JETS: 41

## Model 6900



36" DEEP MODEL:  
SEATING: 6 Person  
TOTAL ALL ACTIVE  
THERAPY JETS: 51







## SERENITY HOT TUB MODEL 4300

Specifications:	
Series	Model 4300
<b>Jets And Plumbing</b>	
Total All Active Therapy Jets	31
<b>Electronics</b>	
Dual Speed Filtration Therapy Pump	
North American 60Hz	4hp
International 50hz	4hp
Stainless Steel HydroWise Heater NA	4Kw
Stainless Steel HydroWise Heater EU	3Kw
Electronic Controls	Yes
Freeze Protection	Yes
Pump Purge	Yes
Standby Mode	Yes
Programmable Filtration Cycles	Yes
Electronic Temperature Control	Yes
MoonFall Package	Opt

### 36" DEEP MODEL SPECS.

**Seating:** 3 Person

**Outer Dimensions:** 85" x 62" x 36"\*  
(215.9 cm x 157.5 cm x 91.44 cm)\*

**Volume:** 243 US gal / 925 L

**Weight Full:** 2,564 lbs / 1,163 kg

\* +/- tolerance of 1/4"

Silver Marble shown here.

### HYDROGUIDE

#### SERENITY MODEL 4300

This hot tub meets or exceeds the energy efficiency standards defined by the state of California.

AMBIENT OUTDOOR TEMPERATURE:	N. AMERICAN MONTHLY COST:	EUROPEAN MONTHLY COST:
LOW: 45° F / 7° C	\$24.19 USD	€ 35.35
HIGH: 75° F / 24° C	\$10.94 USD	€ 15.99

Specific Pump Power: N. American 14.71 W/GPM - European 50.13 W/(m³/h)

The next level of affordable luxury is this popular rectangle-shaped hot tub. Perfect for four people, this model has contoured seating for three and one Never-Float Lounger. Your closest friends and family can now relax and enjoy a new kind of happy hour.

The Serenity 4300 features our exclusive WeatherSeal Insulation and state of the art massage wellness programs.



## SERENITY HOT TUB MODEL 4500

Specifications:	
Series	Model 4500
<b>Jets And Plumbing</b>	
Total All Active Therapy Jets	33
<b>Electronics</b>	
Dual Speed Filtration Therapy Pump	
North American 60Hz	4hp
International 50hz	4hp
Stainless Steel HydroWise Heater NA	4Kw
Stainless Steel HydroWise Heater EU	3Kw
Electronic Controls	Yes
Freeze Protection	Yes
Pump Purge	Yes
Standby Mode	Yes
Programmable Filtration Cycles	Yes
Electronic Temperature Control	Yes
MoonFall Package	Opt

### 36" DEEP MODEL SPECS.

**Seating:** 4 Person

**Outer Dimensions:** 80" X 80" X 36"\*  
(203.2 cm x 203.2 cm x 91.44 cm)\*

**Volume:** 309 US gal / 1,176 L

**Weight Full:** 3,176 lbs / 1,441 kg

\* +/- tolerance of 1/4"

Silver Marble shown here.

### HYDROGUIDE

#### SERENITY MODEL 4500

This hot tub meets or exceeds the energy efficiency standards defined by the state of California.

AMBIENT OUTDOOR TEMPERATURE:	N. AMERICAN MONTHLY COST:	EUROPEAN MONTHLY COST:
LOW: 45° F / 7° C	\$15.80 USD	€ 23.09
HIGH: 75° F / 24° C	\$7.14 USD	€ 10.43

Specific Pump Power: N. American 14.74 W/GPM - European 50.23 W/(m³/h)

Step into the seats that provide you with the luxury experience you deserve. Our High Flo Low Pressure jets will give you a full body massage and guarantee the best hydrotherapy session in your own backyard. Comfortably rejuvenate in a hot tub where each seat can target different pressure point as the jet placement varies. This spa melts away your stress as you rest your head against the soft pillows.









## SERENITY HOT TUB MODEL 5900

### Specifications: Series Model 5900

<b>Jets And Plumbing</b>	
Total All Active Therapy Jets	41
<b>Electronics</b>	
Dual Speed Filtration Therapy Pump	
North American 60Hz	1 x 3hp & 1 x 4hp
International 50hz	1 x 3hp & 1 x 4hp
Stainless Steel HydroWise Heater NA	4Kw
Stainless Steel HydroWise Heater EU	3Kw
Electronic Controls	Yes
Freeze Protection	Yes
Pump Purge	Yes
Standby Mode	Yes
Programmable Filtration Cycles	Yes
Electronic Temperature Control	Yes
MoonFall Package	Opt

**Seating:** 5 Person  
**Outer Dimensions:**  
85" x 85" x 36"\*  
(215.90 cm x 215.90 cm  
x 91.44 cm)\*

**Volume:**  
403 US gal / 1,533 L

**Weight Full:**  
4,048 lbs / 1,837 kg

\* +/- tolerance of 1/4"  
Silver Marble shown here.

### HYDROGUIDE

#### SERENITY MODEL 5900

This hot tub meets or exceeds the energy efficiency standards defined by the state of California.

#### AMBIENT OUTDOOR TEMPERATURE:

LOW: 45° F / 7° C  
HIGH: 75° F / 24° C

#### N. AMERICAN MONTHLY COST:

\$28.99 USD  
\$13.09 USD

#### EUROPEAN MONTHLY COST:

€ 42.36  
€ 19.13

Specific Pump Power: N. American 12.12 W/GPM - European 48.21 W/(m³/h)

Refresh and rejuvenate in this state-of-the-art hot tub that can fit up to five people. Treat yourself to a high-impact, full body massage with our exclusive wellness programs. Each jet is carefully placed to get you the most out of your hydrotherapy session, which is designed to relieve tired and sore muscles. Our full-size lounge and captain seat are customized to hug your body, leaving you feeling stress-free and relaxed.



## SERENITY HOT TUB MODEL 6600

### Specifications: Series Model 6600

<b>Jets And Plumbing</b>	
Total All Active Therapy Jets	31
<b>Electronics</b>	
Dual Speed Filtration Therapy Pump	
North American 60Hz	4hp
International 50hz	4hp
Stainless Steel HydroWise Heater NA	4Kw
Stainless Steel HydroWise Heater EU	3Kw
Electronic Controls	Yes
Freeze Protection	Yes
Pump Purge	Yes
Standby Mode	Yes
Programmable Filtration Cycles	Yes
Electronic Temperature Control	Yes
MoonFall Package	Opt

### 36" DEEP MODEL SPECS.

**SeaSeating:** 6 Person  
**Outer Dimensions:**  
80" x 80" x 36"\*  
(203.2 cm x 203.2 cm  
x 91.44 cm)\*

**Volume:**  
309 US gal / 1,176 L

**Weight Full:**  
3,176 lbs / 1,441 kg

\* +/- tolerance of 1/4"  
Silver Marble shown here.

### HYDROGUIDE

#### SERENITY MODEL 6600

This hot tub meets or exceeds the energy efficiency standards defined by the state of California.

#### AMBIENT OUTDOOR TEMPERATURE:

LOW: 45° F / 7° C  
HIGH: 75° F / 24° C

#### N. AMERICAN MONTHLY COST:

\$22.55 USD  
\$10.19 USD

#### EUROPEAN MONTHLY COST:

€ 32.95  
€ 14.88

Specific Pump Power: N. American 14.73 W/GPM - European 50.19 W/(m³/h)

This high-performance model offers a wide variety of state-of-the-art jets, including the wellness programs, to effectively target muscles that need rehabilitation. It features a wide open seating with lots of foot room and the Clear Spring Filtration provides worry-free operation and crystal-clear spa water to enjoy hours of hydrotherapy and relaxation.





PHOTO COURTESY OF CK SPAS, SAINT-EUSTACHE, QUEBEC





## SERENITY HOT TUB MODEL 6800

### Specifications:

Series	Model 6800
--------	------------

<b>Jets And Plumbing</b>	
Total All Active Therapy Jets	41

<b>Electronics</b>	
Dual Speed Filtration Therapy Pump	
North American 60Hz	1 x 3hp & 1 x 4hp
International 50hz	1 x 3hp & 1 x 4hp
Stainless Steel HydroWise Heater NA	4Kw
Stainless Steel HydroWise Heater EU	3Kw
Electronic Controls	Yes
Freeze Protection	Yes
Pump Purge	Yes
Standby Mode	Yes
Programmable Filtration Cycles	Yes
Electronic Temperature Control	Yes
MoonFall Package	Opt

**36" DEEP  
MODEL SPECS.**  
**Seating:** 6 Person  
**Outer Dimensions:**  
85" x 85" x 36"\*  
(215.90 cm x 215.90 cm  
x 91.44 cm)\*

**Volume:**  
376 US gal / 1,430 L

**Weight Full:**  
3,807 lbs / 1,727 kg

\* +/- tolerance of 1/4"  
Silver Marble shown here.



### HYDROGUIDE

#### SERENITY MODEL 6800

This hot tub meets or exceeds the energy efficiency standards defined by the state of California.

AMBIENT OUTDOOR TEMPERATURE:	N. AMERICAN MONTHLY COST:	EUROPEAN MONTHLY COST:
LOW: 45° F / 7° C	\$30.78 USD	€ 44.98
HIGH: 75° F / 24° C	\$13.90 USD	€ 20.31

Specific Pump Power: N. American 12.12 W/GPM - European 48.21 W/(m³/h)

Comfortably fits up to six adults and includes features such as our Zone Therapy Wellness Programs with jets positioned throughout the spa to target specific muscle groups. The dedicated captain's chair is sculpted to cradle your body. You're all set for the ultimate in relaxation, comfort, and style while soaking sore muscles back to life.

## SERENITY HOT TUB MODEL 6900

### Specifications:

Series	Model 6900
--------	------------

<b>Jets And Plumbing</b>	
Total All Active Therapy Jets	51

<b>Electronics</b>	
Dual Speed Filtration Therapy Pump	
North American 60Hz	1 x 3hp & 1 x 4hp
International 50hz	1 x 3hp & 1 x 4hp
Stainless Steel HydroWise Heater NA	4Kw
Stainless Steel HydroWise Heater EU	3Kw
Electronic Controls	Yes
Freeze Protection	Yes
Pump Purge	Yes
Standby Mode	Yes
Programmable Filtration Cycles	Yes
Electronic Temperature Control	Yes
MoonFall Package	Opt

**36" DEEP  
MODEL SPECS.**  
**Seating:** 6 Person  
**Outer Dimensions:**  
91" x 91" x 36"\*  
(231 cm x 231 cm x 91.44 cm)\*

**Volume:**  
429 US gal / 1,624 L

**Weight Full:**  
4,308 lbs / 1,915 kg

\* +/- tolerance of 1/4"  
Silver Marble shown here.



### HYDROGUIDE

#### SERENITY MODEL 6900

This hot tub meets or exceeds the energy efficiency standards defined by the state of California.

AMBIENT OUTDOOR TEMPERATURE:	N. AMERICAN MONTHLY COST:	EUROPEAN MONTHLY COST:
LOW: 45° F / 7° C	\$34.00 USD	€ 49.68
HIGH: 75° F / 24° C	\$15.36 USD	€ 22.44

Specific Pump Power: N. American 12.30 W/GPM - European 48.92 W/(m³/h)

Equipped with a full-size lounger and captain seat shaped to your body, leaving you to feel stress-free and relaxed. This hot tub easily fits up to six adults. Therapy Jets are placed throughout the spa and designed to target specific muscle groups and work with our zone therapy wellness programs. The ClearSpring Filtration provides worry-free operation and crystal-clear spa water for you to enjoy hours of soaking, hydrotherapy, and relaxation.





PHOTO COURTESY OF CK SPAS, SAINT-EUSTACHE, QUEBEC







# You Have Options With Your Serenity Hot Tub

## 1. SERENITY MOONFALL PACKAGE

Consists of two great options combined...

### A. AquaBlade WaterFall Feature

Features two pop-up waterfall jets that create a beautiful cascading blade of water into your Serenity Hot Tub. These also light-up in conjunction with the Moon Lighting feature and sequence through blue, green and red colorations or can stay on your favorite color.

### B. Moon Lighting

(Cabinet Corner Lighting Feature)

This LED Corner Lighting System illuminates the surroundings and details of the spa's exterior. Enjoy the added convenience and reliability of premium lighting, with bright LED lights that sequence through blue, green and red colorations.

The interior LED Lights illuminate the seating area and can series through the various colors, or can be locked on to one.



1.





## 2. iCommand System WORLD EDITION

A Smart Phone App that is designed as a wireless hot tub control. This allows you to change water care settings and adjust filtration and temperature from wherever you are.

## 3. EZ Ultra PureOzone System

The system is designed for ozone to be added to keep the water clean†.

## 4. Hydropool PureWater System

Designed to keep your Hydropool Hot Tub water clean†and clear the way nature intended.

## 5. Two Tier Universal Step

This option, a two tier step makes entering and exiting your hot tub safe and easy. This Two Tier Step, are available in matching Midnight, Driftwood or Espresso color finishes.

## 6. Standard Acrylic Colors

Your Hydropool Serenity Hot Tub is available in a wide range of colors.

## 7. Standard Cabinet Colors

Your Serenity Model 4300, 4500, 5900, 6600 and 6800 hot tubs all come in your choice of two colors: Designer Harbor Grey and Designer Driftwood.

## 8. 40, 50 Or 60 amp GFCI with Sub-Panel Box

A GFCI breaker can be conveniently installed into the included custom sub panel.



Silver Marble



Pure White



Alpine Mist



Tuscan Sun



Midnight Canyon



Black Opal



Designer Harbor Grey



Designer Driftwood





## Our History With Water

Over 40 years ago, a father and son had a vision that the power of water could play an instrumental role in a family's everyday life. With their extensive background and knowledge in the swimming pool industry, they decided to expand their business to include both hot tubs and swim spas.

They started as retailers with a company called California Spa, Sauna and Fitness in 1978. This was the very first retailer of hot tubs in Eastern Canada. It was there that Dale and Fred developed their love for the retail side of the business. Quickly realizing the potential for hot tubs, Hydropool was formed in 1980. It quickly became one of the largest manufacturers of hot tubs in North America.

In 1995, Hydropool saw the potential of swim spas, and started to manufacture its first product, the AquaTrainer.

Hydropool's growth worldwide has now reached over 400 independent retailers in 60 countries. Hydropool recently added a new 66,000 sq. ft. swim spa manufacturing facility and a new 101,000 sq. ft. parts distribution warehouse. This allows Hydropool to continue to expand to successfully meet all of our consumers' needs. Each of our retailers are professionally trained to assist in selecting your ideal hot tub or swim spa to match your budget and lifestyle needs.

Hydropool Hot Tubs and Swim Spas are manufactured in Mississauga, Ontario Canada, by experienced designers and engineers. We're always striving to exceed our customer's expectations.







# Sharing The Power Of Water Around The Globe

We have been sharing our creations and innovations with water through our worldwide network of retailers for more than 40 years.

[www.hydrosolhottubs.com](http://www.hydrosolhottubs.com)

Algeria	Germany	Reunion Island
Australia	Greece	Romania
Austria	Guadeloupe	Saudi Arabia
Barbados	Hungary	Scotland
Belarus	Iceland	Serbia
Belgium	Indonesia	Singapore
Bermuda	Ireland	Slovak Republic
Brazil	Israel	Spain
Bulgaria	Italy	St. Barts
Canada	Korea	Saint Martin
Cayman Islands	Latvia	Sweden
China	Lithuania	Switzerland
Croatia	Luxembourg	Thailand
Cyprus	Malta	Turkey
Czech Republic	Mexico	Ukraine
Denmark	Monaco	United States
Dubai	Morocco	Wales
Dutch Caribbean	Netherlands	
England	New Caledonia	
Estonia	Northern Ireland	
Finland	Norway	
France	Poland	
French Polynesia	Portugal	
	Qatar	





HYDROPOOL  
hot tubs • swim spas

**THE WATER IS CALLING**












PHOTO COURTESY OF CLAIR AZUR, PARIS, FRANCE

Your Authorized Hydropool Retailer is:

  
**HYDROPOOL**  
hot tubs • swim spas  
**THE WATER IS CALLING**

**Hydropool Inc. Tel: 905.565.6810**  
**Toll Free: 1.800.465.2933**  
**Email: [info@hydropoolhottubs.com](mailto:info@hydropoolhottubs.com)**

 [@hydropoolhottubsandswimspas](https://www.instagram.com/hydropoolhottubsandswimspas)  
 [@hydropoolhottubsandswimspas](https://www.facebook.com/hydropoolhottubsandswimspas)  
 [@Hydropool](https://twitter.com/Hydropool)

\*Clean is defined as the removal of microscopic (down to 3 µm level, varies by model) debris from the water. Ozone aids in the grouping of small debris. Once combined, the debris can be more easily caught by the filtration process.

For more energy rating and HydroGuide information, please refer to our web site at [www.hydropoolhottubs.com](http://www.hydropoolhottubs.com).  
Specifications & Options Subject To Change Without Notice. HTCLL2023E-09/23 © 2023 Hydropool Hot Tubs Inc.